

TOP YOUNG SIRES WITH BREED-LEADING POTENTIAL



BIRTH	WEAN	MILK	YEARLING	SC
-.3	.94	+41	.88	+20
.62	+75	.65	+1.01	.30
CARC	MARB	REA	FAT	%RP
+21	.29	+1.18	.29	+1.30
.29	+1.002	.29	+1.06	.29
Ultrasound Body Composition EPD				
%IMF	RE	FAT	%RP	
+0.07	.08	+1.18	.08	+0.007
				.08
				-.08
				.08

Owned with Paws Up Angus Ranch, Greenough, MT, and Van Nice Angus Ranch, Silver Star, MT

Proven calving-ease, fertility, and disposition along with impressive eye-appeal and volume in his progeny have made CONNECTION one of the most popular young sires in the breed.

\$25 Straw • \$40 Certificate



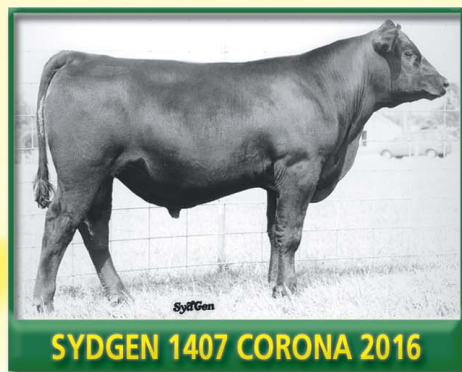
Extra length, frame, and style are hallmarks of this low BW son of MILLCREEK DIVERSITY, whose high-muscle sons are showing up at the top of many bull test stations.

\$16 Straw • \$40 Certificate

BIRTH	WEAN	MILK	YEARLING	SC
+1.9	.80	+50	.73	+27
.54	+88	.65	+27	.40
CARC	MARB	REA	FAT	%RP
+11	.24	+1.17	.25	+1.08
.24	+1.016	.24	+1.20	.24
Ultrasound Body Composition EPD				
%IMF	RE	FAT	%RP	
+0.12	.37	+0.21	.37	+0.001
				.37
				-.03
				.37

Owned with Big Dry Angus Ranch, Jordan, MT

SAF DIRECTIVE



BIRTH	WEAN	MILK	YEARLING	SC
+1.4	.42	+36	.41	+25
.31	+178	.33	+1.18	.31
CARC	MARB	REA	FAT	%RP
+14	.30	+1.24	.31	+1.29
.30	+1.001	.30	+1.13	.30
Ultrasound Body Composition EPD				
%IMF	RE	FAT	%RP	
+0.30	.36	+0.22	.36	-.006
				.36
				+0.22
				.36

Owned with Snake Creek Ranch, Morrill, NE
Named after the young racing quarter horse superstar, this eye-appealing 1407/Precision calf is "off to the races" as well. He was top-selling bull calf in our 2002 sale, then posted ratios of 112 for ADG, 138 for %IMF, and 109 for REA.

\$16 Straw • Certificate \$40



This \$25,000 top-selling bull from our record-breaking 2002 sale is not only a maternal brother to the legendary SAF 598 Bando 5175, but one of the most complete, balanced sons of GAR Precision1680.

BIRTH	WEAN	MILK	YEARLING	SC
+3.3	.05	+38	.05	+24
.05	+79	.05	+1.06	.31
CARC	MARB	REA	FAT	%RP
+14	.30	+1.24	.31	+1.29
.30	+1.001	.30	+1.13	.30
Ultrasound Body Composition EPD				
%IMF	RE	FAT	%RP	
+0.30	.36	+0.22	.36	-.006
				.36
				+0.22
				.36

Owned with Daltons on the Sycamore, Gretna, VA, and Jim & Debbie Davis, Foss, OK

\$20 Straw • Certificate \$40

Always Available from Sydenstricker's

	Semen	Certificate
LEACHMAN BOOM TIME	\$20	\$40
SAF FOCUS J30	\$14	\$40
SYDGEN STERLING 0298	\$16	\$40
MILLCREEK DIVERSITY	\$20	\$40
SYDGEN REFOCUS	\$25	\$40

To order semen or get more information on any sire, just call (573) 581-1225. Most sires are also available through the ORigen network.

The fastest way to get there is to buy the right genetics.

Registered Angus Cattle since 1952
Sydenstricker Genetics

Visitors
Always
Welcome

Eddie Sydenstricker
(573) 581-5555
Fax (573) 581-5991
www.sydgen.com

Sydenstricker John Deere
Office (573) 581-5900
Helen Vorhis, Secretary

P.O. Box 280
Mexico, MO 65265
Fax (573) 581-1224
Stacy Loyd, Farm Secretary

Farm Office (573) 581-1225
Ben Eggers, Mgr. (573) 581-7069
E-mail: eggers@socket.net
Brent Schuering

Sammy Breid
Josh Lewis
Dave Pickereil
Matt Gruber