

A Sampling of Our Best To the 2002 Missouri Angus Futurity

February 22-23, 2003
Columbia, MO

Sale Time 11 a.m. • February 23

Sale Day Phones (573) 882-3355 • (573) 808-0734

All of the proceeds from the sale of this pregnancy will go to support the 2004 National Junior Angus Show July 12 -17, 2004, in Kansas City, MO.

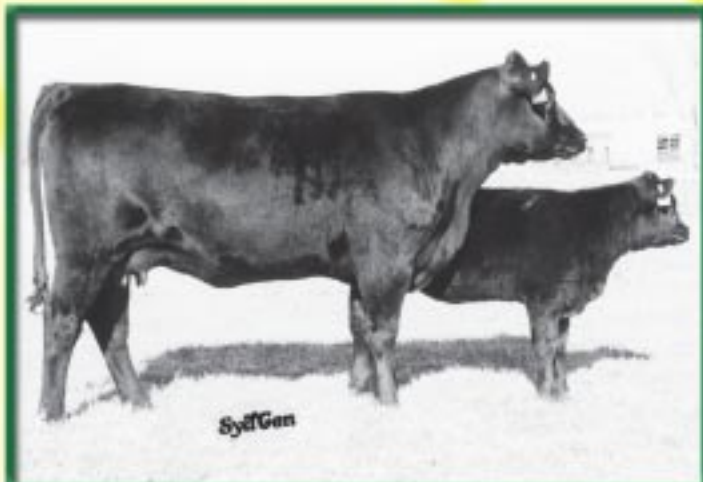
A feature of this offering will be the heifer calf pregnancy due July 3, 2003, sired by Connealy Freightliner and out of the popular GDAR Forever Lady 246. SAF Forever Lady 0020, a maternal sister to this unborn heifer, is the record-selling female ever produced at SydGen, at \$62,000 to Three Trees Ranch, Sharpsburg, GA, in our 2002 Production Sale. A maternal brother, SydGen Refocus, is the record-selling bull from the SydGen program at \$100,000 in our 2001 Production Sale, eclipsing the previous record of \$68,000 set by his full brother, SAF Focus of ER, in our 1996 Sale. 246 is one of the breed's most popular donors, and her multi-trait excellence should mesh very nicely with the growth and muscle of Freightliner.



GDAR FOREVER LADY 246

BIRTH	WEAN	MILK	YEARLING	SC
+3.3 .85	+49 .79	+27 .84	+81 .80	+02 .38
CARC	MARB	REA	FAT	%RP
+6 .30	+19 .31	-08 .30	-001.29	-17 .29
Ultrasound Body Composition EPD				
%IMF	RE	FAT	%RP	
+0.32	.27	+0.28	.27	+0.07 .28

Once again, we will offer what we feel is our very best fall-calving two-year-old pair. This daughter of SVF GDAR 216 LTD is a flush sister to a \$6,000 fall yearling heifer in our 2002 Sale, and a maternal sister to fall heifers that sold for \$13,250 and \$10,000, fall yearling bulls at \$15,000 and \$9,000, the \$13,000 SAF FACTOR at ABS Global, and the \$27,000 SAF FAME, who is established as the highest-grossing semen sales revenue sire we've ever produced. Her FOCUS heifer at side is another powerful example of his curve-bending capabilities.



SAF ROYAL LASS 0362 - Calved 9-3-00
SAF ROYAL LASS 2354 - Calved 9-5-02

BIRTH	WEAN	MILK	YEARLING	SC
+3.4.05	+45 .05	+13 .05	+75 .05	+30.30
CARC	MARB	REA	FAT	%RP
+18 .29	+24 .29	+31 .29	+008.29	+05.29
Ultrasound Body Composition EPD				
%IMF	RE	FAT	%RP	
+0.14	.36	-0.11	.36	-0.03 .37

From our first crop of calves by SAF CONNECTION, the \$50,000 top-selling bull calf of our 2000 calf crop, this excellent cow prospect ranks in the top 25% for BW, yet in the top 5% for WW EPD. Produced by a top two-year-old daughter of DIVERSITY, her grandam's full sister produced the top-selling heifer calf in our 2002 Sale, also a CONNECTION daughter, at \$10,000 to Christina Laake-Lopez, Cypress, TX.



SYDGEN BLACKBIRD LADY 2080
Calved 1-12-02

BIRTH	WEAN	MILK	YEARLING	SC
+1.5 .35	+46 .34	+20 .18	+83 .13	N/A/N/A

We will consign three top February-March yearling bulls to the Missouri All-Breeds Performance-Tested Bull Sale at Kingdom City on March 1. Call (573) 581-1225 for more information.

Registered Angus Cattle since 1952

Always Available from Sydenstricker's

	Semen	Certificates
SAF CONNECTION	\$25	\$40
SAF FOCUS OF ER	\$70	\$40
MILLCREEK DIVERSITY	\$20	\$40
SYDGEN REFOCUS	\$25	\$40
SAF FAME	\$16	\$40

Free round-trip UPS shipping on orders totalling \$500 or more.

The fastest way to get there
is to buy the right genetics.

Sydenstricker Genetics

Visitors
Always
Welcome

Eddie
Sydenstricker
(573) 581-5555
Fax (573) 581-

Sydenstricker John
Deere
Office (573) 581-
5900

P.O. Box 280
Mexico, MO 65265
Fax (573) 581-1224
Stacy Loyd, Farm

Farm Office (573) 581-1225
Ben Eggers, Mgr. (573)
581-7069
E-mail: egggers@socket.net
Sammy Breid
Josh Lewis
Dave Pickerell
Matt Gruber