

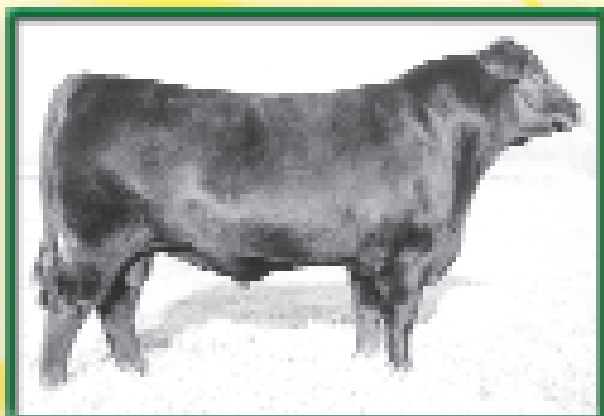
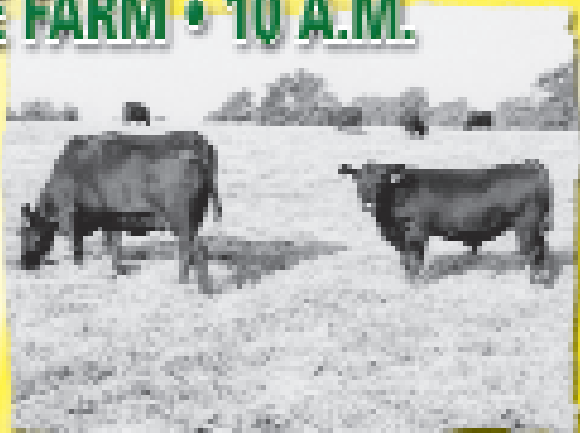
# 25<sup>th</sup> Annual SydGen Production Sale

## NOVEMBER 22, 2003 • AT THE FARM • 10 A.M.

In the previous two issues of the *Angus Journal*, we've shown you a few of the top proven females we'll be offering in this year's sale. The highlights of this annual event, however, are the herd sire prospects. This year is our strongest set of bulls yet, and will include maternal brothers and sons of each of our high accuracy trait leaders FOCUS, FAME, STRATEGY, CONNECTION, and 5175, all graduates of this annual event.

The upper pasture shot, taken in late July, features an E161 son who is a favorite of several visitors, and his CHOICE PLUS/NEUTRON dam, whose maternal brother by DIRECTIVE was the top 205-day weight bull calf from our fall-calving mature cow unit. The lower photo shows our fall bull calves in their new paddock, being developed for the November sale.

These bulls are the result of a dynamic breeding program that utilizes performance records, large contemporary groups, and intense selection pressure for shedding ability and fescue/heat tolerance. The result has been highly adaptable cattle that will perform to their expectations in about any environment. For the third consecutive year, more calves have been recorded with the American Angus Association by SydGen-owned herd sires than by sires of any other breeder.



### SAF DIRECTIVE

The \$25,000 second top-selling bull of our 2001 sale, and our rising star in the new young sire summary, DIRECTIVE's combination of BW, WW, IMF, and UREA EPDs is unmatched. In both of our fall-calving natural bull calf contemporary groups, DIRECTIVE sired the top 205-day weight bull calf. Many of his first progeny will be featured in this offering.

BIRTH	WEAN	MILK	YEARLING	SC
+1.8 .85	+56 .79	+27 .56	+97 .72	+.77 .40
CARC	MARB	REA	FAT	%RP
+15 .25	+1.20 .26	+1.11 .25	+1.016 .25	+1.25 .25
%IMF		Ultrasound Body Composition		EPD
+0.09 .44	+0.34 .44	+0.005 .45	+0.03 .44	

## Selling

- 100 January Bull Calves
- 80 Fall Yearling Bulls
- 42 Bred Heifers
- 47 Fall Yearling Heifers
- 20 Fall Calving Cows
- 30 Spring Calving Cows
- 60 Heifer Calves
- 10 Show Steer Prospects
- 12 Frozen Embryos

### With Annual Registration, Influence Heifer Sale

We hope to have about 300 head of bred heifers for this year's event, all bred to or sired by SydGen sires. We will be including some registered heifers in this year's offering. These will be top cut heifers from leading producers across the country and will have passed a rigid set of specifications to help insure their profitability for their new owners. They will sell at the Callaway Livestock Auction Market at Kingdom City, Missouri, at 7 p.m. on November 22, 2003.

Like a John Deere, we get better with time.

Registered  
Angus Cattle  
Since 1952

Eddie Sydenstricker  
(573) 581-5555  
Fax (573) 581-5991  
www.sydgen.com

Sydenstricker John Deere  
Office (573) 581-5900  
Helen Vorhis, Secretary



P.O. Box 280  
Mexico, MO 65265  
Fax (573) 581-1224  
Stacy Loyd, Farm Secretary

Farm Office (573) 581-1225  
Ben Eggers, Mgr. (573) 581-7069  
E-mail: eggers@socket.net  
Brent Schuering

Sammy Breid  
Josh Lewis  
Dave Pickereil  
Matt Gruber

Semen and A.I. Certificates Always Available.

Visitors  
Always  
Welcome