

SydGen 26th Annual Production Sale

November 20, 2004
10 a.m. At the Farm

Selling 45 Fall Yearling Heifers like these:



This powerful High Prime daughter is the natural calf out of the popular donor, Tehama Blackcap G360.

BIRTH	WEAN	MILK	YEARLING	SC	\$F
+2.8 .33	+47 .33	+22 .19	+82 .30	1-15 .05	+22.47
CARC		MARB	REA	FAT	%RP
1-1 .28	1+.42 .29	1+.25 .28	1-.021 .28	1+.53 .28	+29.88
Ultrasound Body Composition EPD					
%IMF	RE	FAT	%RP	\$B	\$A
1+.38 .05	1+.37 .05	1-.014 .05	1+.53 .05	+45.41	

TEHAMA BLACKCAP N512



The top weaning weight fall heifer at SydGen, she's by SydGen 3130 Maximum 1020 out of the Diversity daughter of SAF Royal Lass 1027, the dam of SAF Fame.

BIRTH	WEAN	MILK	YEARLING	SC	\$F
+2.9 .25	+45 .22	+22 .11	+80 .16	N/A N/A	+21.31
CARC		MARB	REA	FAT	%RP
1+.20 .05	1+.03 .05	1+.001 .05	1-.06 .05		+15.36
Ultrasound Body Composition EPD					
%IMF	RE	FAT	%RP	\$B	\$A
					+34.71

SYDGEN ROYAL LASS 3421



This Directive daughter really spreads the numbers, offering some of the top curve-bender genetics you'll find anywhere.

BIRTH	WEAN	MILK	YEARLING	SC	\$F
-.3 .31	+49 .29	+23 .09	+88 .22	N/A N/A	+27.50
CARC		MARB	REA	FAT	%RP
1+16 .24	1+.14 .25	1+.25 .24	1+.021 .23	1-.13 .23	+15.41
Ultrasound Body Composition EPD					
%IMF	RE	FAT	%RP	\$B	\$A
1+.29 .05	1+.12 .05	1+.012 .05	1-.05 .05	+39.75	

SYDGEN ERICA 3388



This beautiful Connection daughter is a granddaughter of the Birk donor B&M Forever Lady 294, whose progeny have been so popular at the Missouri Angus Futurity.

BIRTH	WEAN	MILK	YEARLING	SC	\$F
+6 .28	+44 .26	+22 .17	+82 .20	1+.39 .05	+23.58
CARC		MARB	REA	FAT	%RP
1+16 .25	1+.17 .26	1+.39 .25	1-.006 .25	1+.30 .25	+19.10
Ultrasound Body Composition EPD					
%IMF	RE	FAT	%RP	\$B	\$A
1+.21 .05	1+.14 .05	1+.005 .05	1+.08 .05	+41.56	

SYDGEN FOREVER LADY 3451



From our first set of calves by Leachman Boom Time, she's out of the Butch's Max 3130 daughter of SAF Royal Lass 1002, the dam of SAF 598 Bando 5175.

BIRTH	WEAN	MILK	YEARLING	SC	\$F
+4.3 .28	+50 .26	+18 .16	+82 .16	1+.55 .05	+21.37
CARC		MARB	REA	FAT	%RP
1+.31 .05	1-.03 .05	1+.015 .05	1-.30 .05		+16.06
Ultrasound Body Composition EPD					
%IMF	RE	FAT	%RP	\$B	\$A
					+36.42

SYDGEN ROYAL LASS 3486

Selling:

- 100 January born herd sire prospects (wintering program available)
- 100 Fall yearling herd sire prospects, ready to go to work
- 40 Spring calving cows, including several donors
- 20 Fall calving pairs, including the dam of Leachman Boom Time
- 55 Bred heifers, from our top cow families
- 80 Heifer calves, including several show prospects
- 42 Fall yearling heifers, ready to breed
- 10 Registered Angus show steer prospects

Always available from SydGen

SAF Connection	\$16
Leachman Boom Time	\$20
SAF Directive	\$20
VDAR New Trend 315	\$15
SAF Focus of ER	\$50
SAF Fame	\$12
SydGen Refocus	\$20
Millcreek Diversity	\$20
SydGen Sterling 0298	\$20
SydGen Eclipse 2478	\$20
SydGen Bouncer 2458	\$16
Big Elban of SydGen 3023	\$16
SAF Choice Plus 8275	\$15
SAF Focus 9095	\$14
SAF Focus J30	\$14
SAF Bulls Eye	\$20
SAF Banker	\$16
Circle A Fame 9493	\$16
SydGen E161 Precision 1485	\$16
SydGen Malibu 1044	\$20
SAF Unlimited 9051	\$15
SAF Mogcks Security	\$16
KCF Bennett Coalition SCC	\$30
SydGen Prestige 1316	\$20
ALC Klass 1F3K	\$20
SAF Millcreek Charisma	\$20
SydGen 1407 Corona 2016	\$20
Spur Success 2801	\$20
SydGen Rocky Road 2060	\$20
SydGen On The Mark	\$16
SydGen Contact	\$16
SVF Hi Road	\$18
SAF Choice Plus	\$15
SAF Neutron	\$75
Butch's Maximum 3130	\$12
SydGen Original 1013	\$14
SydGen Focus 2088	\$20

All AI certs are \$40. Volume discounts available on most sires. Free shipping on orders over \$500. Call 573-581-1225 to order semen or certificates.

7th Annual SydGen Influence Sale

At 7 pm on November 20, 2004, we will once again host a SydGen Influence Heifer Sale, consisting mostly of Angus-based heifers due to calve in the spring, from several of our top commercial producers. There will be some registered heifers in the offering. All will be sired by, or bred to SydGen Herd Sires, and we expect about 250 head.

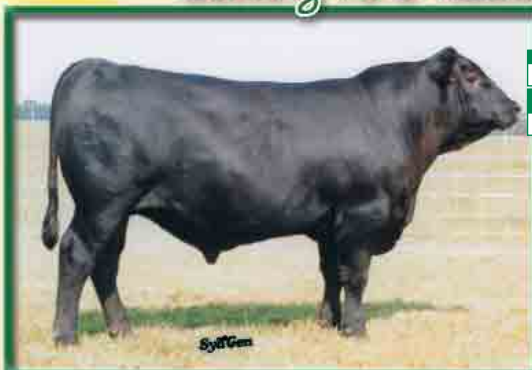
Featuring four frozen embryos by Rito Plus out of SAF Royal Queen 5084!

November 20, 2004

10 a.m. At the Farm

Selling 100 head of Fall Yearling Heifer Sires like these:

26th Annual Production Sale **SydGen**



BIRTH	WEAN	MILK	YEARLING	SC	SF					
+2.6	.28	+44	.25	+27	.12	+77	.13	N/A	N/A	+18.83
Ultrasound Body Composition EPD										
%IMF	RE	FAT	%RP	SB						
+1.42	.05	+1.19	.05	+1.005	.05	+1.13	.05	+40.99		

SYDGEN STERLING 3471

Calved September 15, 2003

The top weaning weight bull from our entire fall bull crop, this son of the 2nd highest IMF EPD sire on the young sire summary is out of a powerful young Exacto daughter from the Forever Lady cow family.



BIRTH	WEAN	MILK	YEARLING	SC	SF					
+1.9	.38	+50	.30	+27	.25	+87	.27	+1.50	.05	+26.16
Ultrasound Body Composition EPD										
CARC	MARB	REA	FAT	%RP	SB					
+1.0	.30	+1.43	.30	+1.35	.30	+1.023	.30	+1.63	.30	+26.53
%IMF	RE	FAT	%RP	SB						
+1.21	.05	+1.26	.05	+1.013	.05	+1.08	.05	+44.31		

SYDGEN 323 DESIGN 3585

Calved September 15, 2003

This rugged son of 323 puts it all together. His dam was the \$14,000 second high-selling fall calver of our 2003 sale, and is a flush sister to SAF Strategy 9015, SAF Focus 9095, SAF Focus J30, SAF Bulls Eye, and SAF Focus 903.



BIRTH	WEAN	MILK	YEARLING	SC	SF					
+3.5	.30	+45	.31	+20	.15	+75	.21	+1.57	.05	+16.59
Ultrasound Body Composition EPD										
%IMF	RE	FAT	%RP	SB						
+1.27	.05	+1.24	.05	+1.015	.05	+1.04	.05	+35.15		

SYDGEN BOOM TIME 3501

Calved October 7, 2003

From our first set of Boom Time calves, this complete, well-made bull is out of an 036 daughter from a John Rotert cow.



BIRTH	WEAN	MILK	YEARLING	SC	SF					
+2.8	.31	+50	.30	+24	.10	+93	.20	N/A	N/A	+32.00
Ultrasound Body Composition EPD										
%IMF	RE	FAT	%RP	SB						
+1.23	.05	+1.12	.05	+1.0	.05	+1.02	.05	+41.07		

SYDGEN REFOCUS 3457

Calved September 10, 2003

One of our most powerful Refocus calves, 3457 is the natural calf out of our 1407 donor that came to us as the top-selling bred heifer from the 2001 Beartooth Sale.

Sale book will be included with your November Angus Journal.

Past "graduates" of this sale offering include SAF Fame, SAF Focus of ER, SAF 598 Bando 5175, SAF Easy Fortune, SAF Connection, SAF Directive, SAF Strategy 9015, SAF Focus 9095, SydGen Refocus, and SydGen Sterling 0298.

Get your reservations in early, as the Mizzou - K State Football game is at Columbia, MO, on November 20, 2004.

Amerihost Inn, Mexico, MO 573-582-0055
 Holiday Inn Express, Mexico, MO 573-582-0700
 Days Inn, Mexico, MO 573-581-1860
 Days Inn, Kingdom City, MO 573-642-0050
 Comfort Inn, Kingdom City, MO 573-642-7745
 Super 8 Motel, Kingdom City, MO 573-642-2888
 AmeriHost Inn, Fulton, MO 573-642-0077
 Holiday Inn Express, Fulton, MO 573-642-2600
 Villager Lodge, Mexico, MO 573-581-1440
 Villa Inn, Mexico, MO 573-581-8350

Ask for the Sydenstricker block of rooms
 Ask for the Sydenstricker block of rooms
 Ask for the Sydenstricker block of rooms
 15 miles south of the farm
 15 miles south of the farm
 15 miles south of the farm
 20 miles south of the farm
 20 miles south of the farm

The farm is located 50 miles from the Columbia airport, 100 miles from the St. Louis airport and 180 miles from the Kansas City airport. Commuter service is available to Columbia or Kingdom City. Private planes can land on the 5,500 runway at the Mexico Memorial airport.

Registered
 Angus Cattle
 Since 1952

Sydenstricker Genetics

Eddie Sydenstricker
 (573) 581-5555
 Fax (573) 581-5991
 www.sydgen.com

Sydenstricker John Deere
 Office (573) 581-5900
 Helen Vorhis, Secretary

P.O. Box 280
 Mexico, MO 65265
 Fax (573) 581-1224
 Mary Snell, Farm Secretary

Farm Office (573) 581-1225
 Ben Eggers, Mgr. (573) 581-7069
 E-mail: eggers@socket.net
 Brent Schuering

Sammy Breid
 Josh Lewis
 Dave Pickerell
 Matt Gruber