

Create Your Tomorrows . . .

. . . at our 29th Annual Production Sale November 17, 2007

A moderate-sized cow converting grass into milk and beef, with a strapping six-month-old heifer calf at side. Isn't this what one would expect from a Pathfinder® cow ranking well into the top 1% of current dams on the SW index? 0513 doesn't stop there, with CED in the top 5% of current dams, an IMF EPD in the top 2%, REA EPD in the top 10%, and SB index in the top 2%. A daughter produced the \$42,500 SydGen Crown Duchess, the top-selling heifer calf in our history, to Belle Point Ranch, Lavaca, AR.

Flushed twice, producing a total of 18 transferable embryos, SAF Duchess 0513 will sell in her entirety, bred to SydGen 1407 Corona 2016. Her heifer calf at side, by the \$30,000 TK Angus sire SydGen Bullet, also sells, as do frozen embryos from SydGen Duchess 4098, the dam of SydGen Crown Duchess and also a daughter of 0513.

Small Crown Duchess



\$42,500 granddaughter of SAF Duchess 0513



SAF DUCHESS 0513 AND SYDGEN DUCHESS 7105

CED	BW	WW	YW	SC	CEM	MILK	CARCASS	ULTRASND
+10	+8	+44	+82	+50	+11	+28	MARBLING	IMF
							REA	UREA
							+1.33	+42
							+1.04	+37

- 100 January Bull Calves
- 130 Fall Yearling Bulls
- 30 Coming Two-Year-Old Bulls
- 30 Fall-calving Pairs
- 45 Spring-calving Cows

- 75 Bred Heifers
- 80 Fall Yearling Heifers
- 90 Spring Heifer Calves
- 10 Show Steer Prospects

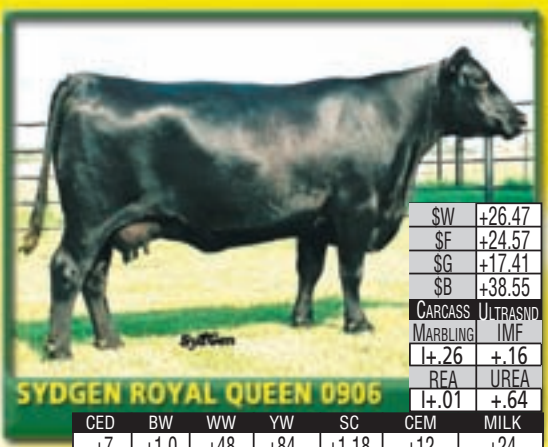
We also expect more than 300 head of commercial bred heifers for our 10th Annual SydGen Influence Sale, to be held the night of November 17th.



SYDGEN ENVIOUS LADY 6113

SW	+29.31
SF	+30.88
SG	+18.52
SB	+43.80
CARCASS	ULTRASND
MARBLING	IMF
+1.31	+20
REA	UREA
+1.32	+35

CED	BW	WW	YW	SC	CEM	MILK
+9	+1.0	+50	+91	N/A	+9	+20



SYDGEN ROYAL QUEEN 0906

SW	+26.47
SF	+24.57
SG	+17.41
SB	+38.55
CARCASS	ULTRASND
MARBLING	IMF
+1.26	+16
REA	UREA
+1.01	+64

CED	BW	WW	YW	SC	CEM	MILK
+7	+1.0	+48	+84	+1.18	+12	+24

Just one of the 75 top bred heifers to be offered, she's sired by the up-and-coming SydGen Contact out of a two-year-old daughter of SydGen Rocky Road 2060, who is also the maternal grandsire of SydGen Crown Duchess. Grandam is a Papa Durabull donor with 4 BR-99, 4 WR-109, 4 YR-109, 4 IMF-112, and 4 REA-111. 6113 sells bred to SydGen Journey 4355, who will himself be a sale feature.

Dam of the \$12,800 embryo package in our 2006 sale to KCS Angus, Novinger, MO, this powerful female from the Royal Queen family will sell in her entirety, along with two ET heifer calves by SS Objective T510 OT26. A grandson is the second highest adj. WW bull calf from our fall program. 0906 sells bred to SydGen Bullet and pasture exposed to Corona. At least 12 of the 75 cows selling have served as donors in the SydGen program.

Highlights from the new Sire Summary
 Corona is now the No. 3 SB Sire on the Main Summary.
 Promise is now the No. 3 SB Sire on the Young Sire Summary.
 Connection, Directive, Bouncer, Fame, Focus, Strategy, Refocus, Hi Road, Success, Diversity and Sterling all debuted at +9 or better on the new Heifer Pregnancy EPD and no SydGen bred or owned sire ranked below +6.

Call 573-581-1225 or go to www.sydgen.com for more information on our program, our sale offering, or our herd sires. Semen and AI certificates always available.

Visitors welcome.

Registered Angus Cattle Since 1952

Sydenstricker Genetics

Eddie Sydenstricker
 (573) 581-5555
 Fax (573) 581-5991
www.sydgen.com

Sydenstricker John Deere
 Office (573) 581-5900
 Helen Vorhis, Secretary

P.O. Box 280
 Mexico, MO 65265
 Fax (573) 581-1224

Farm Office (573) 581-1225
 Ben Eggers, Mgr. (573) 581-7069
 E-mail: eggers@socket.net
 Suzy Harrison, Farm Secretary

Bub Raithe
 Brent Schuering
 Sammy Breid
 Matt Gruber
 Kyle Vukadin