

Exceeding Expectations . . .



SydGen Exceed 3223

CW	+75
MARB	+1.27
RE	+1.09
\$W	+71.42
\$B	+194.69

CED	BW	WW	YW	RADG	SC	DOC	HP	MILK
+7	-1.1	+56	+109	+29	+1.76	+31	+19.3	+45

END PRODUCT MERIT

Scanned 8.83% IMF to ratio 139 as a yearling, with a 15.9 REA, ratioing 103, and fat ratios of 93 and 85. Debuted in July of 2016 as the Number 1 \$B sire on the young sire summary, a position he continues to hold, as well as currently ranking second among all active sires for \$B. He also ranks in the top 1% for Marbling and CW EPDs, the top 3% for REA and the top 10% for Fat EPD. First 26 progeny ratio 106 for IMF and 101 for REA.

SALABILITY

Used at SydGen as a yearling on heifers, his first calf crop, all by natural service, included the \$30,000 SydGen Enhance 5209, co-top-selling bull in our 2015 Sale to Mogck & Sons (also available through ORigen); the \$15,000 SydGen Bullion to Silverado Farms (also available through ORigen); the \$11,000 SydGen Exceed 5164 to Cardinal Hill Farms and the \$6,000 SydGen Exceed 5195 to S&S Farms of Central Missouri. His maternal sister, SydGen Forever Lady 6093, was the featured Lot 1 heifer calf of the recent SydGen Production Sale.

**Owned with Shawnee Winds Angus,
Jefferson City, MO.
Don Schaefer and Pam Walther 573-619-6141**

**Semen \$30, with volume discounts available
Certificates \$40. Call 573-581-1225 to order semen.**

CONVENIENCE

Ranks in the top 2% of current sires for Docility EPD. Ranks in the top 10% of proven sires for RADG EPD. Exceed, his ancestors and his progeny are all excellent for slick haircoats. Sound-footed and well-made, his video is available on his page at www.ORigenbeef.org

MATERNAL

Top 1% for Milk and top 4% on the \$W index. His cow family is a long-time progenitor of top females and herd sires. Dam is currently the No. 5 \$B active dam in the breed. Grandam was the \$30,000 top-selling cow in our 2013 sale and dam of the 2014 NJAS Grand Champion Carcass Steer. Third dam was a featured donor in our 2010 sale. Fourth dam, the \$62,000 top-selling female in our 2002 sale, is one of the strongest, high-marbling, high-accuracy dams in the breed, as well as being the dam of SydGen Contact 2063. Fifth dam was our pick of the 1992 GDAR heifer calf crop, and the dam of the widely-used SAF Focus of ER, with more than \$1.7M in semen sales. Sixth dam was the legendary 395 cow, foundation of the Forever Lady cow family.

FERTILITY

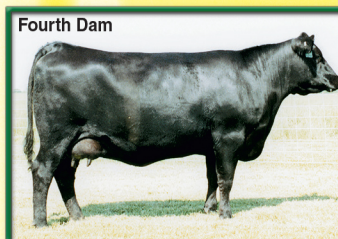
Ranks in the top 5% for Scrotal EPD. Has consistently made high volumes of high-quality semen. 14 sons have averaged 102 ratio for scrotal circumference. Ranks in the top 15% for Heifer Pregnancy EPD.



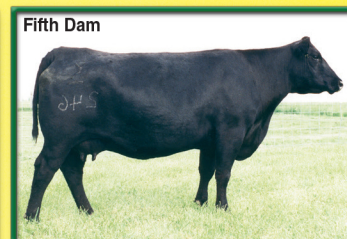
SydGen ForeverLady 1255



SydGen Forever Lady 6093



SA Forever Lady 0020



GDAR Forever Lady 246

Registered
Angus Cattle
Since 1952

Eddie Sydenstricker
eddie@sydenstrickers.com
Fax (573) 581-5991
www.sydgen.com

Sydenstricker John Deere
Office (573) 581-5900
Kim Sydenstricker-Monte

P.O. Box 280
Mexico, MO 65265
Fax (573) 581-1224

Ben Eggers (573) 473-9202
eggers@socket.net
Bub Raithel (573) 253-1664
Farm Office (573) 581-1225
Darla Eggers

Kyle Vukadin
Joe Strauss
Roger Cranmer
Kenneth Roberts
Cash Prestien

Visitors
Always
Welcome!

Sydenstricker Genetics