

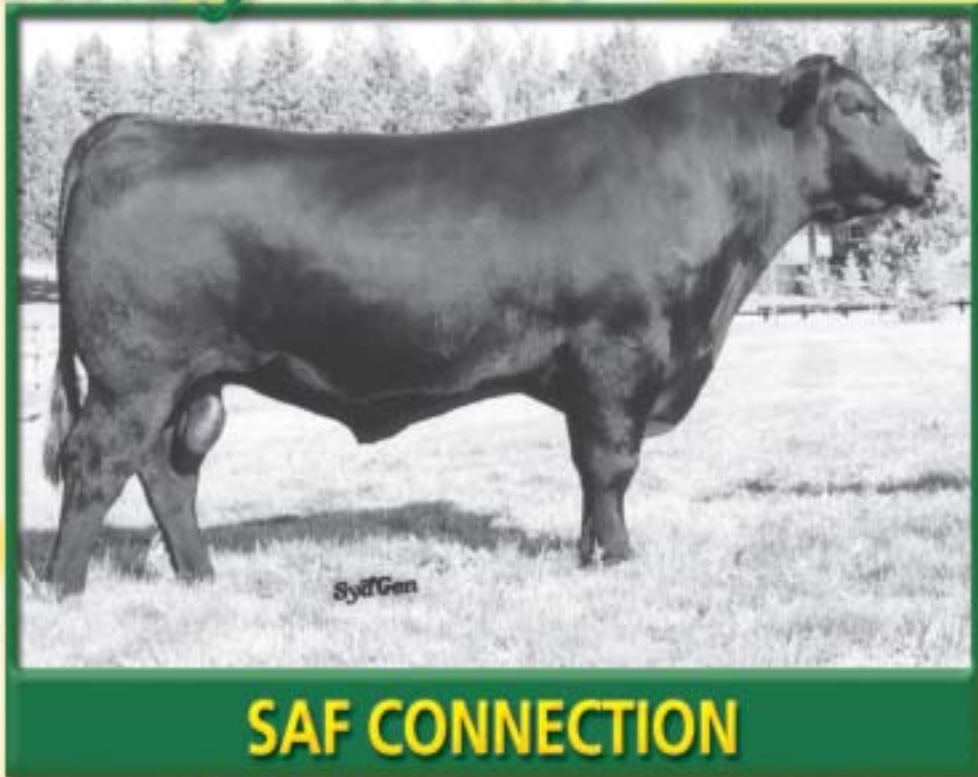
# What's Looking Good?

The most often-asked question among purebred breeders, and one that has about as many answers as there are bulls in the Angus breed! Over time, a few bulls always sort out to the top, and they generally have several things in common: Impressive statistics, powerful EPDs, pleasing phenotype, and if he's really a long-term herd sire - a powerful dam.

**CONNECTION** possesses two other very important attributes: disposition and fertility. In fact, semen used in 2001 in a UMC study achieved a 79% conception rate on timed A.I.

Many of you had opportunity to see **CONNECTION** in his two-year-old form at the recent NILE, or his first calf crop in our recent production sale.

He's looking good.  
His calves are looking good.



## SAF CONNECTION

BIRTH	WEAN	MILK	YEARLING	SC
+1.6	.68	+49	.63	+22
+83	.62	+02.30		
CARC	MARB	REA	FAT	%RP
+23	.29	+1.15	.29	+36.28
-0.04	.28	+13.28		
Ultrasound Body Composition EPD				
%IMF	RE	FAT	%RP	
+1.12	.07	+0.05	.07	+0.10
.07				-0.14
				.07

Owned with Paws Up Angus Ranch, Greenough, MT, and Van Nice Angus Ranch, Silver Star, MT



SAF ROYAL QUEEN 5084

### \$25 Straw/\$40 Certificate

Available from SydGen, ORlgen, ABS Global, and many independent semen distributors

## His maternal brothers are looking good too!



SAF STRATEGY 9015



SAF FOCUS 903



SAF BULLS EYE



SAF FOCUS 9095



SAF DIRECTIVE

BIRTH	WEAN	MILK	YEARLING	SC
+7	.92	+59	.86	+25
+61	.97	.78	+75	.43
CARC	MARB	REA	FAT	%RP
+9	.26	+1.11	.27	+09.26
-0.03	.26	+01.26		
Ultrasound Body Composition EPD				
%IMF	RE	FAT	%RP	
+1.19	.60	+0.15	.60	-0.32
.60				.60

Available from ABS Global

BIRTH	WEAN	MILK	YEARLING	SC
+1	.85	+47	.80	+25
+58	.78	.74	+37	.31
CARC	MARB	REA	FAT	%RP
+9	.26	+1.11	.27	+09.26
-0.03	.26	+01.26		
Ultrasound Body Composition EPD				
%IMF	RE	FAT	%RP	
+1.16	.47	+0.15	.47	-0.22
.47				.47

Available from Accelerated Genetics

BIRTH	WEAN	MILK	YEARLING	SC
-3.7	.89	+40	.84	+25
+59	.81	.32	.42	
CARC	MARB	REA	FAT	%RP
+9	.26	+1.11	.27	+09.26
-0.03	.26	+01.26		
Ultrasound Body Composition EPD				
%IMF	RE	FAT	%RP	
+0.1	.48	+0.024	.48	-0.43
.48				.48

Available from Semex and SydGen • \$25

BIRTH	WEAN	MILK	YEARLING	SC
-4	.76	+46	.70	+25
+57	.68	+37	.31	
CARC	MARB	REA	FAT	%RP
+9	.26	+1.11	.27	+09.26
-0.03	.26	+01.26		
Ultrasound Body Composition EPD				
%IMF	RE	FAT	%RP	
+1.11	.36	+0.03	.36	+0.05
.36				.14
				.36

Available from SydGen • \$16

BIRTH	WEAN	MILK	YEARLING	SC
+23	.40	+50	.41	+29
.28	.89	.32	+28	.40
CARC	MARB	REA	FAT	%RP
+15	.19	+1.10	.20	+16.19
+0.07	.18	+0.08	.18	
Ultrasound Body Composition EPD				
%IMF	RE	FAT	%RP	
+0.08	.37	+0.21	.37	+0.01
.37				+0.1
				.37

Available from SydGen • \$16

Call (573) 581-1225 for information, semen, and A.I. Certificates on all our sires.

The fastest way to get there is to buy the right genetics.

Registered Angus Cattle since 1952

# Sydenstricker Genetics

Visitors  
Always  
Welcome

Eddie Sydenstricker  
(573) 581-5555  
Fax (573) 581-5991  
www.sydgen.com

Sydenstricker John Deere  
Office (573) 581-5900  
Helen Vorhis, Secretary

P.O. Box 280  
Mexico, MO 65265  
Fax (573) 581-1224  
Stacy Loyd, Farm Secretary

Farm Office (573) 581-1225  
Ben Eggers, Mgr. (573) 581-7069  
E-mail: egggers@socket.net  
Brent Schuering

Sammy Breid  
Josh Lewis  
Dave Pickerell  
Matt Gruber