



SydGen KCF Gavel 8361



Connealy Cool 39L



SydGen FATE 2800



SydGen Enhance



URF Alpha G138



SydGen Exceed 3223



Sydgen Stealth 8556



SydGen Rockstar 3461



De-Su Volunteer B122



Bakers Northside 6007



HPCA Early Bird 65



BCA Patriarch 4113



SydGen Big Branch 6653



SydGen 928 Destination 5420



SydGen Black Pearl 2006



SydGen CC&7



SydGen Trust 6228



SydGen Blueprint

Twentieth Annual Spring Influence Sale

Tuesday • 6 p.m.

April 15, 2025

New Cambria Auction Market
New Cambria, Missouri



TWENTIETH ANNUAL SPRING SYDGEN INFLUENCE SALE

April 15, 2025 • 6 p.m. • New Cambria Auction Market
 North of Hwy. 36 • New Cambria, Missouri • (660) 226-5222
 Barn is located on the north side of Hwy. 36,
 between Macon and Brookfield.

SELLING:

50 Registered Angus Bulls
 1 Registered Two-year-old Pair
 40 Commercial Two-year-old Pairs

SALE DAY PHONES: (573) 473-9202 • (660) 226-5222 • (573) 253-8588

AUCTIONEER: Chas Wheeler (573) 473-2508

REPRESENTATIVES::

Bill Bowman, Missouri Beef Cattleman (816) 752-0079
 Adam Conover, American Angus Association..... (816)676-8560
 Julie Conover, Missouri Angus Trails..... (734) 260-8635
 Wes Tiemann, WT Marketing LLC..... (816) 244-4462

SPECIAL GUESTS:

Roger Behlman, President, Missouri Angus Association
 Josh Gilbert, President-Elect, Missouri Angus Association
 Holly Meyer, Vice President, Missouri Angus Association
 Darla Eggers, Secretary, Missouri Angus Association
 Mike Deering, Executive VP, Missouri Cattlemen's Association
 Jeff Reed, President, Missouri Cattlemen's Association

ACCOMMODATIONS, MACON, MO:

Comfort Inn (660) 395-8000
 Super 8 (660) 385-5788
 America's Best Value Inn..... (660) 385-2125
 Travelers Motel..... (660) 385-2102

KNOWN GENETIC CONDITIONS: All animals selling will be tested AM, CA, NH, D2 and/or OS Free, or have no direct pedigree linkage to carrier animals. Most have already been tested by catalog time. The others will be tested AMF, CAF, NHF and/ or D2F by sale day, or they will not sell. Potential DD and OH carriers should have results by sale day, and will sell.

HEALTH: Missouri, Iowa and Illinois are Class Free TB and Class Free Brucellosis States. All cattle will sell with interstate health papers available on sale day. Many of the consignors maintain Certified Brucellosis Free Herds and several are on a Johnes testing program. Sydenstricker Genetics maintains Certified Brucellosis Free Herd #322. All bulls have passed a breeding soundness evaluation within 60 days of sale day, and those papers will accompany the bulls. All consignors maintain an acceptable herd health and vaccination program, and all bulls have been vaccinated for IBR, BVD and PI3, BRSV, Lepto-5 and Vibrio, and de-wormed and de-loused within 60 days of sale.

TRICHOMONIASIS: Any non-virgin bulls and any bulls over 24 months of age are required to have a negative PCR trichomoniasis test within 30 days of the sale. They must not have had contact with any breeding age females for at least 30 days prior to that test.

In the event that a buyer wants to return a bull to the farm of the seller as a non-breeder, the bull must have a negative PCR trichomoniasis test before he is returned. A positive test for trich will void any breeding guarantees.

TRUCKING: Buyers are responsible for making trucking arrangements on animals purchased. We would like for buyers to move their bulls by the day after the sale, unless special arrangements with the New Cambria Livestock Market are made. SydGen and the sellers will also assist the buyers in moving bulls to a different location and caring for the bulls until trucking can be arranged.

INSURANCE: Livestock insurance will be available sale day.

TERMS AND CONDITIONS: Terms of the sale are cash or good check. Cattle will sell under the Terms and Conditions as recommended by the American Angus Association. All persons who attend the sale do so at their own risk, and neither Sydenstricker Genetics nor New Cambria Livestock Market assumes any liability, legal or otherwise, for any accidents which may occur.

ANGUSMEDIA EPDs contained in the hard copy of this sale book were current as of print date. Digital versions of this sale book can be viewed online at www.angus.org and will have EPDs updated every Friday with the exception of EPD references in footnotes and photos. Any PDF downloads from the website will contain EPDs current as of the date downloaded. References: American Angus Association®, AHIR®, AngusLinkSM, CAB®, Pathfinder®.

INTERESTS RETAINED IN BULLS: You will notice we are selling half revenue-sharing interest with full possession in some bulls. This means the bull is totally in your control as far as how you want to handle him, and you get 100% of the salvage value of the bull. Simply, the Seller has the right to half the semen sales revenue from the bull if sometime in the future, semen sales becomes a possibility. If you sell the bull to another breeder, the original Seller retains that half interest. If you purchase a half interest bull and wish to collect some semen on the bull as an "insurance policy" for your own use, that semen is 100% yours, unless the Seller is in contact with you and also wishes to collect the bull, either for within herd use, or to build a jointly-owned bank of semen for sale.

SERVICE SIRES to use on heifers for the Show-Me Select Heifer Program must have a Calving Ease Direct (CED) EPD of +7 or higher, and be genomically tested on Angus GS or the Zoetis test.

SERVICE SIRES to use on heifers for the SydGen Influence Sale to be held December 4, 2025 must be +1.0 or lower BW EPD OR +7 or higher for CED EPD, and must carry the SydGen prefix in their name or be graduates of a SydGen Influence sale.

SEMEN is available on most SydGen Sires either direct from us, or through the ORigen network.



Go to www.dvauction.com for information on how to sign up for on-line bidding.



Ben W. Eggers, Manager (573) 473-9202
 Farm Office (573) 581-1225
 Fax (573) 581-1224
 E-mail: Ben@sydgen.com
 Bub Raithe (573) 253-1664
 Kyle Vukadin
 Kenneth Roberts
 Tristan Crick
 Blake McDonald (573) 205-7914

Eddie L. Sydenstricker
 Sydenstricker John Deere
 Office (573) 581-5900
 Fax (573) 581-5991
 P.O. Box 280
 Mexico, MO 65265
 Kim Sydenstricker- Monte
www.sydgen.com
 Darla Eggers

Dear Cattlemen,

Welcome to our Twentieth Annual SydGen Influence Spring Sale. As many of you know, we have always sold our fall yearling bulls and January bull calves in our Annual Production Sale in November. We appreciate the acceptance of commercial cattlemen of our program and our sale offerings through the years. We are proud to include these contributing breeders who have used our genetics to create a larger group of SydGen influenced bulls to offer to the public.

The February-born SydGen bulls selling today were weaned on October 1, with yearling weights, hip heights, scans, scrotal and foot scores all taken on February 13. They were fed silage with a commodity mix and grain added, on a 20 acre fescue paddock with free choice grass hay. After yearling weights were taken, they were continued on the same ration, along with forced exercise to help condition them for pasture use. The average daily gain was 2.79 lbs./day over 136 days, and they had .24 inch average ribfat cover.

This sale is designed to increase the number of SydGen influenced sires in the Midwest's good commercial and seedstock herds. Over the years, we have brought many outside bloodlines into our herd, and tested them with the extremes of Missouri's climate and fescue challenges, and we have seen differences in the adaptability. We have tried to mold the bloodlines that work into the herd sires we produce, and are proud of how well they've done for others. The contributing breeders selling today are performance-minded, with a long-term commitment to breeding better Angus cattle, and we think you will be pleased with the offering.

Ben Eggers

Eddie L. Sydenstricker

**Blair Carney Angus
Blair and Erin Carney****1060 105th Street
Adair, IA 50002****641-740-5016
blairjcarney@gmail.com**

Blair ran commercial cows for many years, and that herd is now used as recipients for progeny of the BCA donors. A small base of registered Angus cows was started in 2008, with the goal of developing a high quality product, incorporating several SydGen sires both AI and natural. They are members of USPB. They believe their embryo transfer program has increased their quality to an even higher level. Blair has consigned bulls and females to this event since 2012, with many selling at or near the top of the offering. Lots 4, 6, 13, 14, 15, 38, 46, 47.

**AJC Angus
Adam, Julie, Lillie & Lydia Conover****634 SW 1201st Road
Holden, MO 64040****(816) 676-8560 Adam
(734) 260-8635 Julie
Conoverju@gmail.com**

Both third generation livestock producers, Adam and Julie made Holden their home in 2018. Combining two small cow herds, they now have a joint breeding philosophy and have used their time together to build the herd with 2025 being the first opportunity to purchase from AJC Angus. Embryo transfer and artificial insemination along with the use of great herd bulls continues to propel the program forward. Adam and Julie were recently honored by Missouri Cattlemen's Association with their Leadership Development Award. Lillie and Lydia are fourth generation American Angus Auxiliary members and love life on the farm. Lots 48, 49, 50.

Dalbey & McIntyre Angus**21131 Danube Rd.
Burlington Junction, MO****Jim Dalbey (712) 303-1182
Colt McIntyre (660)725-7271**

The Dalbey family began their venture in the registered Angus business in 1941. Their primary focus at the time was to produce bulls that would work for the commercial cowman and that focus hasn't changed in 84 years. Colt McIntyre joined the operation 14 years ago and has been a great asset. Colt brought a young outlook and is a full partner in the operation. Lots 7, 8, 9.

**Eggers Stock Farm
Richard, Marica and Gabe Eggers****734 CR 614
Jackson, MO 63755****(573) 225-7705
rickmaricaeggers@gmail.com**

Eggers Stock Farm has been in the registered Angus business since 1964, growing from early involvement in 4-H and FFA, with several cow families being on the farm for over 50 years. They currently run about 70 cows, all registered Angus. Market steers are sold to USPB and as freezer beef, and genetic selection emphasizes performance, carcass traits and fescue adaptability. Certified Brucellosis Free Herd #750. Lots 1, 28, 31, 41, 44, 45.

**Graupman Angus
Kris and Tracy Graupman****4152 CR 230, Palmyra, MO 63461
Home: (573) 769-2956****Cell: (573) 248-4958
kgraupman@centurytel.net**

In the registered Angus business since 1986, Graupman Angus sells 30-35 bulls per year. They have consigned several top-selling and A- graded bulls in the NEMO BCIA and the MO BCIA sales. Kris is a past President of the Missouri Angus Association, and has consigned to this event every year since its inception. Lots 12, 20, 21, 22, 36.

**Herron Angus
Tim, Amber and Ivory Herron****13250 Audrain Road 919
Mexico, MO****(573)473-2087
Timelvin79@gmail.com**

Tim's late father, Tom Herron, began raising registered Angus in 1990, and Tim and his family have continued the tradition, growing the herd with both phenotype and performance as priorities. They market both bulls and females through consignment sales around the state. Lot 50 and 50A.

**Mershon Cattle LLC,
Buckner and Appleton City, MO
Bruce and Tracey Mershon****816-289-3765 (C)
31107 Lake City Buckner Road
Buckner, MO 64016****Bruce@mershoncattle.com
www.mershoncattle.com**

Mershon Cattle is a commercial cattle operation run by the Mershon family in Jackson County, Missouri. They have been using Sydgen bulls and semen since 2004. Their herd consists of Angus based, cross-bred cows that have been AI bred using Hereford and Charolais semen. Steers are retained and sold on the grid. Brothers of the heifers offered today graded 98% choice or higher. All heifers offered are from Mershon Cattle's home-raised cows. Mershon Cattle LLC was awarded the 2013 Missouri Angus Association Commercial Producer of the Year Award. In 2019, they were awarded the highest honor possible for a commercial cattle breeder, the BIF Commercial Breeder of the Year Award. Bruce is currently Past-President of Missouri Cattlemen's Association, and was recently awarded "Cattelman of the Year" at the annual convention. Tracey currently serves as Chairman of the Missouri Beef Industry Council. Bruce and Tracey have consigned heifers to the Fall SydGen Influence sales for eleven years, and this is their seventh year bringing pairs to this sale.

**CMS Angus
Curtis and Michelle Smith****8090 County Road 403
Fulton, MO 65251****(573)220-1149
Twomules68@hotmail.com**

CMS has raised Angus cattle since 2009 on their family farm. They maintain about 25 females, and are always trying to improve their genetics, putting a special emphasis on fertility and disposition. Lots 17, 18, 19, 36.

**Wallis Angus Farms
Billy and Jenny Wallis****310 W. Cedar Hills Dr.
Millersville, Missouri 63766****(573)837-2525
wallisangusfarms@hotmail.com**

Wallis Angus Farms(WAF) is located near Millersville in Southeast Missouri. Billy Wallis has strived to breed Angus cattle that perform in the field and feedlot. The operation is based on decades of combined experience in selecting, breeding, and raising quality beef. From raising and showing steers and heifers in 4-H as a youth, helping and now being part of the Show-Me-Select Heifer (SMS) program from its beginning, high performing cattle is at the heart of their family business. Billy serves on the board of the SEMO Cattlemen's Association. He and his family run approximately 100 plus head of commercial Angus cattle and 15 head of Registered Angus. They currently market 25 to 30 head of SMS qualified heifers annually at the local Show-Me-Select sale or off the farm. Their best bull prospects are available for sale through consignment to quality performance sales or private treaty. Lots 33, 34, 42, 43.





URF Alpha G138

Birth Date: 11-20-2019

Bull *19806618

Tattoo: G138

REFERENCE SIRE

Claw	Angle	HS
+40	+36	+33
RADG	YH	
+35	+9	
HP	DOC	
+12.9	+26	



SM	+64
CW	+83
SW	+90
MARB	+90
RE	+94
FAT	+004
SB	+205
SC	+330

CED	BW	WW	YW	SC	MILK	MW
+11	+9	+96	+164	+1.55	+31	+135

One of the most powerful multi-trait sires in the breed today, he sired the \$45,000 top-selling bull and the \$70,000 top-selling full interest female in the 2024 SydGen Production sale in November.



ESF Alpha G53

Birth Date: 09-19-2023

Bull 20954359

Tattoo: G53

BW	RATIO	WW	RATIO	YW	RATIO	ADJ HIP	ADJ SC
90	129	954	126	1500	121	53.3	

*URF Alpha G138
 #*Bar R Jet Black 5063
 +*URF Sarah 1514



#ESF Jannet G22

#*SydGen Blacksmith 4010
 *ESF Jannet G9

#*Connealy Black Granite
 Bar R Iris Anita 0113
 #**R B Tour Of Duty 177
 +*Yon Sarah Y79

SM	+53
SW	+81
SF	+131
SB	+205
SC	+319

CED	BW	WW	YW	RADG	SC	DOC	CLAW	ANGLE	HS	HP	CEM	MILK	CW	MARB	RE
+2	+4.5	+103	+179	+39	+52	+18	+46	+41	+11	+11.5	+6	+27	+83	+95	+1.01

Dam Progeny Record	BWR	WWR	YWR	IMF	UREA	RBFT	RPFT
	5-107	5-111	5-113	5-97	5-107	5-103	5-112

Eggers Stock Farm

A powerful son of Alpha that boasts top-tier growth and strong predictions for HS. Selling half interest and full possession.



SydGen Alpha 4236

Birth Date: 02-01-2024

Bull *21087394

Tattoo: 4236

BW	RATIO	WW	RATIO	YW	RATIO	ADJ HIP	ADJ SC
82	109	790	123	1212	111	50.0	34.77

*URF Alpha G138
 #*Bar R Jet Black 5063
 +*URF Sarah 1514



*SydGen Royal Queen 0209

*SydGen Merit 6553
 S A Royal Queen 4220

#*SydGen Exceed 3223
 +*H P C A Prophet A104
 SydGen CC & 7 0065
 +*SydGen Royal Queen 8842

SM	+87
SW	+93
SF	+107
SB	+186
SC	+328

CED	BW	WW	YW	RADG	SC	DOC	CLAW	ANGLE	HS	HP	CEM	MILK	CW	MARB	RE
+7	+1.7	+85	+141	+29	+49	+20	+42	+39	+24	+18.8	+13	+42	+68	+1.13	+63

Dam Progeny Record	BWR	WWR	YWR	IMF	UREA	RBFT	RPFT
	3-104	2-111	2-108	2-116	2-92	2-98	2-102

Sydenstricker Genetics

Solid EPD profile in this Alpha son. Note his impressive WW, HP, Milk, ANG, \$M, and \$W values.



LOT 2 - SYDGEN ALPHA 4236



LOT 6 - BCA ALPHA 4044



SydGen Alpha 4250

Birth Date: 02-04-2024

Bull 21087398

Tattoo: 4250

BW	RATIO	WW	RATIO	YW	RATIO	ADJ HIP	ADJ SC
63	93	762	119	1378	126	49.8	36.71

*URF Alpha G138
 #*Bar R Jet Black 5063
 +*URF Sarah 1514

#*Connealy Black Granite
 Bar R Iris Anita 0113
 #**R B Tour Of Duty 177
 +*Yon Sarah Y79

*SydGen Gammer 2026
 **E&B Plus One
 +*EZAR Gammer 6J74

#*Connealy Confidence Plus
 #+E&B Lady 1023 Precision 936
 Sitz Dollar Up 489Z
 R/M Gammer 3A34

CED	BW	WW	YW	RADG	SC	DOC	CLAW	ANGLE	HS	HP	CEM	MILK	CW	MARB	RE
+12	+3	+98	+176	+1.34	+73	+27	+43	+43	+1.39	+11.3	+8	+32	+85	+91	+1.04

Dam Progeny Record	BWR	WWR	YWR	IMF	UREA	RBFT	RPFT
	1-93	1-119	1-126	1-68	1-113	1-112	1-133

Sydenstricker Genetics

Alpha son with double-digit calving ease coupled with top 1% WW and YW. Selling half interest and full possession.



BCA Alpha 4029

Birth Date: 02-22-2024

Bull *21054244

Tattoo: 4029

BW	RATIO	WW	RATIO	YW	RATIO	ADJ HIP	ADJ SC
76	92	684	96	1250	101	51.2	39.74

*URF Alpha G138
 #*Bar R Jet Black 5063
 +*URF Sarah 1514

#*Connealy Black Granite
 Bar R Iris Anita 0113
 #**R B Tour Of Duty 177
 +*Yon Sarah Y79



#**FF Rita 5G31 of 3826 Granite

#*Connealy Black Granite
 #Eura Elga of Conanga 9109
 #*G A R Predestined
 +G A R Grid Maker 1823

SM	+60
SW	+77
SF	+98
SB	+145
SC	+248

CED	BW	WW	YW	RADG	SC	DOC	CLAW	ANGLE	HS	HP	CEM	MILK	CW	MARB	RE
+10	+1.1	+78	+127	+25	+1.02	+18	+48	+39	+49	+11.2	+9	+28	+58	+53	+71

Dam Progeny Record	BWR	WWR	YWR	IMF	UREA	RBFT	RPFT
	6-108	6-106	5-103	5-111	5-100	5-118	5-130

Blair Carney Angus

Show-Me Select qualified heifer bull that should sire slick-haired calves.



SydGen Alpha 4370

Birth Date: 02-27-2024

Bull *21087424

Tattoo: 4370

BW	RATIO	WW	RATIO	YW	RATIO	ADJ HIP	ADJ SC
71	97	710	111	1152	106	49.4	39.60

*URF Alpha G138
 #*Bar R Jet Black 5063
 +*URF Sarah 1514

#*Connealy Black Granite
 Bar R Iris Anita 0113
 #**R B Tour Of Duty 177
 +*Yon Sarah Y79



*SydGen Lady Madam 0929

*SydGen KCF Gavel 8361
 *K C F Miss Fortress B398
 #*Connealy Cavalry 1149
 LA Lady Madam 610S

SM	+80
SW	+86
SF	+121
SB	+192
SC	+329

CED	BW	WW	YW	RADG	SC	DOC	CLAW	ANGLE	HS	HP	CEM	MILK	CW	MARB	RE
+8	+7	+89	+141	+26	+2.39	+30	+28	+35	+23	+13.3	+8	+25	+77	+1.01	+81

Dam Progeny Record	BWR	WWR	YWR	IMF	UREA	RBFT	RPFT
	2-106	2-103	2-99	2-116	2-96	2-102	2-99

Sydenstricker Genetics

Solid EPD tabulation on this Alpha son that is exceptionally strong for WW, SC, CLAW, and Angle.



BCA Alpha 4044

Birth Date: 03-03-2024

Bull *21054240

Tattoo: 4044

BW	RATIO	WW	RATIO	YW	RATIO	ADJ HIP	ADJ SC
86	105	792	111	1459	117	55.6	42.73

*URF Alpha G138
 #*Bar R Jet Black 5063
 +*URF Sarah 1514

#*Connealy Black Granite
 Bar R Iris Anita 0113
 #**R B Tour Of Duty 177
 +*Yon Sarah Y79



*BCA Anita 0024

#*SydGen FATE 2800
 +*SydGen Heroine 9808
 #*SydGen C C & 7
 SydGen Anita 8611

SM	+54
SW	+79
SF	+134
SB	+199
SC	+312

CED	BW	WW	YW	RADG	SC	DOC	CLAW	ANGLE	HS	HP	CEM	MILK	CW	MARB	RE
+6	+2.8	+97	+173	+38	+1.87	+14	+47	+47	+45	+9.5	+13	+23	+84	+67	+1.23

Dam Progeny Record	BWR	WWR	YWR	IMF	UREA	RBFT	RPFT
	3-103	3-102	1-117	1-74	1-115	1-87	1-96

Blair Carney Angus

Big time WW, YW, and RE in this Alpha son with a bottom-side pedigree loaded with some of SydGen's finest. Selling half interest and full possession.



SydGen KCF Gavel 8361

Birth Date: 02-23-2018

Bull *19195196

Tattoo: 8361

REFERENCE SIRE

Claw	Angle	HS
+27	+35	+32

RADG	YH
+35	+1.3

HP	DOC
+10.8	+19

CED	BW	WW	YW	SC	MILK	MW
+4	+2.5	+89	+166	+1.20	+32	+129



SM	+55
CW	+78
MARB	+73
RE	+69
FAT	-.023
SW	+83
SF	+121
SB	+180
SC	+288

No other sire can match his combination of Claw and YW EPDs, and his daughters are ratioing 102 on their first 247 calves.



LOT 11 - SYDGEN EAGLE 4324

SYDGEN EAGLE 1529 - SIRE OF LOT 11



Dalbey Mc Gavel 342

Birth Date: 02-24-2023

Bull 20832830

Tattoo: 342

BW	RATIO	WW	RATIO	YW	RATIO	ADJ HIP	ADJ SC
91	113	791	112	1381	114		39.29

*SydGen KCF Gavel 8361

**Baldridge Colonel C251
*K C F Miss Fortress B398

**baldridge Xpand x743
*Baldridge Isabel Y69
**K C F Bennett Fortress
K C F Miss Southside Z541



Dalbey MC Firepower 811
Dalbey Mc Pridemere 021
Dalbey Mc Pridemere 815

**G A R Sure Fire
Dalbey Mc Pridemere 636
*E&B Confirmed 560
Dalbey Mc Pridemere 618

SM	+65
SW	+93
SF	+126
SB	+183
SC	+302

CED	BW	WW	YW	RADG	SC	DOC	CLAW	ANGLE	HS	HP	CEM	MILK	CW	MARB	RE
-3	+3.8	+100	+164	+29	+1.14	+19	+4.5	+3.4	+4.8	+10.2	-1	+32	+87	+71	+71

Dam Progeny Record	BWR	WWR	YWR	IMF	UREA	RBFT	RPFT
	3-95	3-104	3-107	3-109	3-93	3-115	3-109

Dalbey & McIntyre Angus

A strong-aged Gavel cow bull with exceptional WW, YW, and \$W.



Dalbey Mc Gavel 349

Birth Date: 02-28-2023

Bull 20832829

Tattoo: 349

BW	RATIO	WW	RATIO	YW	RATIO	ADJ HIP	ADJ SC
86	107	732	103	1212	99		38.92

*SydGen KCF Gavel 8361

**Baldridge Colonel C251
*K C F Miss Fortress B398

**baldridge Xpand x743
*Baldridge Isabel Y69
**K C F Bennett Fortress
K C F Miss Southside Z541



Dalbey Mc Erica 046
Dalbey Mc Erica 720

**Hoover Dam
Jet S S X144
**Connealy Consensus 7229
Dalbey Mc Erica 352

SM	+80
SW	+84
SF	+111
SB	+159
SC	+286

CED	BW	WW	YW	RADG	SC	DOC	CLAW	ANGLE	HS	HP	CEM	MILK	CW	MARB	RE
+6	+1.7	+81	+145	+28	+4.7	+15	+3.3	+3.3	+4.1	+12.4	+10	+36	+74	+4.5	+1.03

Dam Progeny Record	BWR	WWR	YWR	IMF	UREA	RBFT	RPFT
	3-108	3-103	3-103	3-103	3-92	3-99	3-106

Dalbey & McIntyre Angus

Another 2 year old Gavel son that excels for WW, YW, Milk, Claw, Angle, RE, and \$W.



Dalbey Mc Gavel 336

Birth Date: 02-24-2023

Bull 20832832

Tattoo: 336

BW	RATIO	WW	RATIO	YW	RATIO	ADJ HIP	ADJ SC
75	94	808	114	1267	104		38.29

*SydGen KCF Gavel 8361

**Baldridge Colonel C251
*K C F Miss Fortress B398

**baldridge Xpand x743
*Baldridge Isabel Y69
**K C F Bennett Fortress
K C F Miss Southside Z541



#SydGen Enhance
#Dalbey Mc Skene Rose 019
Dalbey Mc Skene Rose 702

**SydGen Exceed 3223
SydGen Rita 2618
**KM Broken Bow 002
Dalbey Mc Skene Rose 501

SM	+75
SW	+94
SF	+89
SB	+144
SC	+262

CED	BW	WW	YW	RADG	SC	DOC	CLAW	ANGLE	HS	HP	CEM	MILK	CW	MARB	RE
+3	+2	+81	+137	+26	+5.7	+24	+3.9	+5.3	+1.8	+15.2	+0	+43	+61	+5.1	+1.14

Dam Progeny Record	BWR	WWR	YWR	IMF	UREA	RBFT	RPFT
	3-92	3-108	3-108	3-102	3-106	3-90	3-86

Dalbey & McIntyre Angus

Another Gavel son ready for heavy service. Note his top 1% Milk and \$W.



SydGen Eagle 4324

Birth Date: 02-17-2024

Bull *21087411

Tattoo: 4324

BW	RATIO	WW	RATIO	YW	RATIO	ADJ HIP	ADJ SC
74	107	775	121	1281	117	52.4	37.12

SydGen Eagle 1529

*SydGen KCF Gavel 8361
+SydGen Lady 8839

**Baldridge Colonel C251
*K C F Miss Fortress B398
#SydGen Enhance
SydGen Lady 1548



**DE-SU Volunteer B122
*BMA Rita 207
*BMA Rita 966

*E W A Peyton 642
*E W A 3128 of 9067 Weigh Up
**SydGen Blacksmith 4010
BMA Rita 731

SM	+77
SW	+78
SF	+125
SB	+193
SC	+327

CED	BW	WW	YW	RADG	SC	DOC	CLAW	ANGLE	HS	HP	CEM	MILK	CW	MARB	RE
+9	+2	+84	+154	+33	+5.9	+27	+3.8	+4.0	+4.6	+17.7	+9	+28	+77	+9.9	+7.7

Dam Progeny Record	BWR	WWR	YWR	IMF	UREA	RBFT	RPFT
	1-107	1-121	1-117	1-98	1-110	1-144	1-137

Sydenstricker Genetics

Eagle was the top-selling bull of our 2022 Production Sale and this is the first son we've offered. Dam is a top two year old Volunteer. Selling half interest and full possession.



Dalbey Mc Gavel 344

Birth Date: 02-25-2023

Bull 20832823

Tattoo: 344

BW	RATIO	WW	RATIO	YW	RATIO	ADJ HIP	ADJ SC
88	106	726	102	1192	98		39.83

*SydGen KCF Gavel 8361

**Baldridge Colonel C251
*K C F Miss Fortress B398

**baldridge Xpand x743
*Baldridge Isabel Y69
**K C F Bennett Fortress
K C F Miss Southside Z541



#S Whitlock 179
Dalbey MC Skene Rose 825
Dalbey MC Skene Rose 305

**S Chisum 6175
*S Pride Anna 709
**Shipwheel Chinook
Dalbey 550 Skene Rose MC 105

SM	+68
SW	+81
SF	+86
SB	+134
SC	+242

CED	BW	WW	YW	RADG	SC	DOC	CLAW	ANGLE	HS	HP	CEM	MILK	CW	MARB	RE
+5	+3	+75	+135	+24	+1.16	+21	+3.3	+4.7	+3.3	+12.9	+4	+37	+57	+5.8	+5.8

Dam Progeny Record	BWR	WWR	YWR	IMF	UREA	RBFT	RPFT
	5-103	5-101	5-94	5-96	5-97	5-83	5-86

Dalbey & McIntyre Angus

Age-advantaged Gavel son that reads exceptionally strong for Claw shape and Milk EPDs.



KG Indeed 4454

Birth Date: 11-18-2023

Bull 21168293

Tattoo: 4454

BW	RATIO	WW	RATIO	YW	RATIO	ADJ HIP	ADJ SC
68	99	716	102	1289	100	52.0	36.95

**Mead Indeed

**LD Capitalist 316
**Mead Primrose N198

**Connealy Capitalist 028
LD Dixie Erica 2053
**Plattmeyer Weigh Up K360
#Mead Primrose K247



*SydGen KCF Gavel 8361
*SydGen Joy 6946

**Baldridge Colonel C251
*K C F Miss Fortress B398
**SydGen Multi Tool 2432
*SydGen Joy 3466

SM	+74
SW	+72
SF	+109
SB	+153
SC	+272

CED	BW	WW	YW	RADG	SC	DOC	CLAW	ANGLE	HS	HP	CEM	MILK	CW	MARB	RE
+11	+1.2	+77	+139	+33	+1.57	+26	+3.6	+4.2	+6.5	+9.1	+13	+25	+63	+5.6	+4.6

Dam Progeny Record	BWR	WWR	YWR	IMF	UREA	RBFT	RPFT
	1-99	1-102	1-100				

Graupman Angus

The sire of this bull is a maternal brother to Mead Magnitude. He is Show-Me Select qualified for heifers and should be a foot improver.





DE-SU Volunteer B122

Birth Date: 07-31-2018

Bull #19352491

Tattoo: B122

REFERENCE

SIRE

Claw	Angle	HS
+35	+44	+54
RADG		
YH		
+31 +1.5		
HP		
DOC		
+14.6 +18		



SM	+75
CW	+72
SW	+83
MARB	+1.73
SF	+124
RE	RE
SB	+229
FAT	SC
+0.07	+372

CED	BW	WW	YW	SC	MILK	MW
+13	+2	+78	+144	+1.04	+42	+87

One of the breed's most powerful combinations of CED, Marbling and \$C, and sire of numerous top-sellers at SydGen, Brinkley Angus Ranch, and other top sales.



BCA Volunteer 4043

Birth Date: 03-02-2024

Bull 21054227

Tattoo: 4043

BW	RATIO	WW	RATIO	YW	RATIO	ADJ HIP	ADJ SC
89	107	750	105	1363	110	54.5	39.51

#*E W A Peyton 642	#*Quaker Hill Manning 4EX9		
#*E W A 4128 of 9067 Weigh Up	#*E W A 444 of 968 Progress		
	#*Plattemere Weigh Up K360		
	#*Rita 9067 of Rita 5M13 Obj		
		SM	+69
		SW	+76
		SF	+122
		SB	+183
		SC	+306

CED	BW	WW	YW	RADG	SC	DOC	CLAW	ANGLE	HS	HP	CEM	MILK	CW	MARB	RE
+9	+1.0	+78	+145	+31	+77	+21	+29	+36	+69	+15.3	+13	+37	+73	+89	+48

Blair Carney Angus
This Show-Me Select qualified Volunteer son should add frame, Milk, and improve foot quality. Selling half interest and full possession.



BCA Volunteer 4031

Birth Date: 02-23-2024

Bull #21190816

Tattoo: 4031

BW	RATIO	WW	RATIO	YW	RATIO	ADJ HIP	ADJ SC
64	94	539	82	1109	96	50.3	35.26

#*E W A Peyton 642	#*Quaker Hill Manning 4EX9		
#*E W A 4128 of 9067 Weigh Up	#*E W A 444 of 968 Progress		
	#*Plattemere Weigh Up K360		
	#*Rita 9067 of Rita 5M13 Obj		
		SM	+59
		SW	+72
		SF	+102
		SB	+186
		SC	+300

CED	BW	WW	YW	RADG	SC	DOC	CLAW	ANGLE	HS	HP	CEM	MILK	CW	MARB	RE
+10	+1.5	+76	+143	+35	+70	+9	+36	+49	+26	+14.2	+13	+33	+53	+1.13	+1.15

Blair Carney Angus
Sired by Volunteer and out of a cow that was a \$20,000 feature of the 2020 Missouri Angus Futurity. Note his double-digit calving ease, added growth, Milk, and end-product merit.



SydGen Smokey 4177 [DDF]

Birth Date: 01-24-2024

Bull #21087392

Tattoo: 4177

BW	RATIO	WW	RATIO	YW	RATIO	ADJ HIP	ADJ SC
89	117	736	115	1253	115	52.3	37.36

#*E W A Peyton 642	#*Quaker Hill Manning 4EX9		
#*E W A 3128 of 9067 Weigh Up	#*E W A 444 of 968 Progress		
	#*Plattemere Weigh Up K360		
	#*Rita 9067 of Rita 5M13 Obj		
		SM	+67
		SW	+65
		SF	+140
		SB	+232
		SC	+368

CED	BW	WW	YW	RADG	SC	DOC	CLAW	ANGLE	HS	HP	CEM	MILK	CW	MARB	RE
+5	+2.0	+74	+140	+34	+52	+17	+33	+52	+73	+16.3	+15	+29	+76	+1.37	+1.08

Sydenstricker Genetics
This Smokey son will be easy to find on sale day with his added size and scale. Out of a proven cow with a great progeny record, and top 2% \$C. Selling half interest and full possession.



BCA Volunteer 4032

Birth Date: 02-23-2024

Bull #21053874

Tattoo: 4032

BW	RATIO	WW	RATIO	YW	RATIO	ADJ HIP	ADJ SC
57	84	605	100	1104	100	50.3	34.76

#*E W A Peyton 642	#*Quaker Hill Manning 4EX9		
#*E W A 3128 of 9067 Weigh Up	#*E W A 444 of 968 Progress		
	#*Plattemere Weigh Up K360		
	#*Rita 9067 of Rita 5M13 Obj		
		SM	+74
		SW	+84
		SF	+112
		SB	+190
		SC	+320

CED	BW	WW	YW	RADG	SC	DOC	CLAW	ANGLE	HS	HP	CEM	MILK	CW	MARB	RE
+14	+0	+71	+131	+28	+96	-2	+29	+51	+56	+13.4	+14	+43	+66	+1.11	+83

Blair Carney Angus
Twin with lot 13, this brother boasts even more CED, added Milk, and a top 2% Claw.



CMS Peytons Earl 9924

Birth Date: 08-26-2023

Bull 20890795

Tattoo: 9924

BW	RATIO	WW	RATIO	YW	RATIO	ADJ HIP	ADJ SC
76	92						

#*E W A Peyton 642	#*Quaker Hill Manning 4EX9		
SydGen Queen 4492	#*E W A 444 of 968 Progress		
	#*Plattemere Weigh Up K360		
	#*Rita 9067 of Rita 5M13 Obj		
		SM	+72
		SW	+65
		SF	+112
		SB	+186
		SC	+313

CED	BW	WW	YW	RADG	SC	DOC	CLAW	ANGLE	HS	HP	CEM	MILK	CW	MARB	RE
+11	-.1	+61	+109	+27	+63	+19	+43	+42	+33	+14.4	+14	+35	+60	+1.06	+77

Curtis & Michelle Smith
Double-digit calving in this Peyton grandson. Stems from a cow family developed at Robertson Angus Farms, Russellville, MO



LOT 15 -
BCA VOLUNTEER 4043



LOT 16 -
SYDGEN SMOKEY 4177



CMS Peyton Linus 4123 [AMF-CAF-D2F-DDF-M1F-NHF-OHF-OSF-RDF]

Birth Date: 08-26-2023

Bull 20953019

Tattoo: CMS41

BW	RATIO	WW	RATIO	YW	RATIO	ADJ HIP	ADJ SC
72	100	581	100	1074	100		

#*E W A Peyton 642	#*Quaker Hill Manning 4EX9		
SydGen Queen 4492	#*E W A 444 of 968 Progress		
	#*Plattemere Weigh Up K360		
	#*Rita 9067 of Rita 5M13 Obj		
		SM	+66
		SW	+69
		SF	+91
		SB	+150
		SC	+261

CED	BW	WW	YW	RADG	SC	DOC	CLAW	ANGLE	HS	HP	CEM	MILK	CW	MARB	RE
+6	+1.4	+62	+107	+24	+33	+18	+57	+46	+45	+10.7	+10	+34	+45	+7.3	+71

Curtis & Michelle Smith
Another grandson of Peyton. Paternal grandam has recorded a WW ratio of 107 on 10 calves at SydGen.





CMS Peytons Mr Big 2124

Birth Date: 11-12-2023 Bull #20890798 Tattoo: 2124

BW	RATIO	WW	RATIO	YW	RATIO	ADJ HIP	ADJ SC
92	113	695	100	1181	100		

SydGen Peyton 0922 #*E W A Peyton 642
 SydGen Queen 4492 #*Quaker Hill Manning 4EX9
 #*E W A 444 of 968 Progress
 *SydGen 5420 Destination 1315
 Flag Queen 00787

ANGUSGS
 *KG Kem 2113 #*SydGen Big Branch 6653
 KG Kem 1907 +*BCA Jack Black 4112
 *SydGen Roseanne 3346
 #*G A R Prophet
 KG Kem 1369

SM	+72
SW	+92
SF	+117
SB	+205
SC	+338

CED	BW	WW	YW	RADG	SC	DOC	CLAW	ANGLE	HS	HP	CEM	MILK	CW	MARB	RE
+5	+3.3	+91	+156	+34	-20	+20	+34	+42	+20	+13.6	+5	+43	+76	+1.26	+1.00

Dam Progeny Record	BWR	WWR	YWR	IMF	UREA	RBFT	RPFT
	1-113	1-100	1-100				

Curtis & Michelle Smith
 Paternal brother to lots 17 & 18 and out of a graduate of the 2022 SydGen Influence Sale, sired by the 2018 Missouri State Fair Grand Champion Bull.



KG Archie 4428

Birth Date: 02-14-2024 Bull #21168358 Tattoo: 4428

BW	RATIO	WW	RATIO	YW	RATIO	ADJ HIP	ADJ SC
70	94	696	103	1286	107	51.2	39.17

**SydGen Archie 0652 #*E W A Peyton 642
 +*SydGen Mary Blackbird 6802 #*Quaker Hill Manning 4EX9
 #*E W A 444 of 968 Progress
 *SydGen FATE 2800
 *Tehama Mary Blackbird B244

HDSOK
 *KG Rita 2108 #*SydGen Big Branch 6653
 +*G A R Complete 1411 +*BCA Jack Black 4112
 *SydGen Roseanne 3346
 +*G A R 5050 New Design 1959 #*Summitcrest Complete 1P55
 #*Summitcrest Complete 1P55
 #*Summitcrest Complete 1P55
 +*G A R 5050 New Design 1959

SM	+46
SW	+64
SF	+106
SB	+176
SC	+274

CED	BW	WW	YW	RADG	SC	DOC	CLAW	ANGLE	HS	HP	CEM	MILK	CW	MARB	RE
+6	+1.7	+68	+119	+27	+1.46	+19	+39	+43	+44	+10.3	+4	+31	+58	+1.03	+66

Dam Progeny Record	BWR	WWR	YWR	IMF	UREA	RBFT	RPFT
	2-95	2-104	2-105	1-119	1-106	1-123	1-96

Graupman Angus
 Dam is a maternal brother to lot 20. The paternal grandam of lots 20, 21, & 22 is the maternal grandam of GAR Verified 2683, and was a productive SydGen donor, now working for Galaxy Beef, Macon, MO.



KG Archie 4453

Birth Date: 12-20-2023 Bull #21168294 Tattoo: 4453

BW	RATIO	WW	RATIO	YW	RATIO	ADJ HIP	ADJ SC
64	84	719	103	1333	104	51.4	37.36

**SydGen Archie 0652 #*E W A Peyton 642
 +*SydGen Mary Blackbird 6802 #*Quaker Hill Manning 4EX9
 #*E W A 444 of 968 Progress
 #*SydGen FATE 2800
 *Tehama Mary Blackbird B244

HDSOK
 +*G A R Complete 1411 #*Summitcrest Complete 1P55
 +*G A R 5050 New Design 1959 #*C F Right Design 1802
 Summitcrest Elba 1M17
 #*G A R New Design 5050
 G A R Objective 1067

SM	+48
SW	+67
SF	+80
SB	+129
SC	+215

CED	BW	WW	YW	RADG	SC	DOC	CLAW	ANGLE	HS	HP	CEM	MILK	CW	MARB	RE
+12	+8	+68	+120	+25	+1.11	+19	+42	+44	+15	+5.9	+14	+29	+45	+4.2	+1.02

Dam Progeny Record	BWR	WWR	YWR	IMF	UREA	RBFT	RPFT
	6-104	7-105	6-105	7-108	7-103	7-107	7-113

Graupman Angus
 Show-Me Select qualified heifer bull out of a past SydGen donor that is now in production for Graupman, and is the maternal grandam of Lot 21.



KG Archie 4427

Birth Date: 02-29-2024 Bull #21168362 Tattoo: 4427

BW	RATIO	WW	RATIO	YW	RATIO	ADJ HIP	ADJ SC
78	109	690	102	1162	97	50.2	35.65

**SydGen Archie 0652 #*E W A Peyton 642
 +*SydGen Mary Blackbird 6802 #*Quaker Hill Manning 4EX9
 #*E W A 444 of 968 Progress
 #*SydGen FATE 2800
 *Tehama Mary Blackbird B244

HDSOK
 *SydGen Blackcap 1501 #*S S Enforcer E812
 +*Spruce Mtn Blackcap 7147 #*SydGen Enhance
 #*S S Miss Daybreak K011 3K17
 #*Baldrige Colonel C251
 Spruce Mtn Blackcap 4018

SM	+81
SW	+69
SF	+106
SB	+174
SC	+307

CED	BW	WW	YW	RADG	SC	DOC	CLAW	ANGLE	HS	HP	CEM	MILK	CW	MARB	RE
+9	-4	+74	+136	+32	+1.46	+30	+29	+43	+48	+10.5	+13	+22	+56	+9.7	+7.3

Dam Progeny Record	BWR	WWR	YWR	IMF	UREA	RBFT	RPFT
	1-109	1-102	1-97	1-93	1-97	1-123	1-85

Graupman Angus
 Another Archie son that is Show-Me Select qualified with a balanced set of EPDs.

Spring 2025 - Percent Breakdown - NonParent Bulls

Top Pct	CED	BW	WW	YW	RADG	DMI	SC	Doc	Claw	Angle	HS	HP	CEM	Milk	CW	Marb	RE	\$M	\$W	\$F	\$G	\$B	\$C
1%	+17	-3.0	+98	+171	+38	-0.7	+2.22	+35	+27	+29	+0	+20.5	+16	+40	+91	+1.80	+1.43	+100	+92	+141	+110	+238	+372
2%	+16	-2.5	+94	+165	+37	+0.9	+2.07	+33	+30	+32	+0.6	+19.6	+16	+38	+87	+1.67	+1.34	+96	+89	+135	+103	+228	+360
3%	+15	-2.1	+92	+161	+36	+1.9	+1.96	+32	+31	+33	+0.9	+19.0	+15	+37	+84	+1.59	+1.28	+93	+87	+132	+99	+221	+352
4%	+14	-1.9	+91	+158	+35	+2.7	+1.89	+32	+32	+34	+1.2	+18.6	+15	+36	+82	+1.53	+1.24	+91	+85	+129	+96	+216	+345
5%	+14	-1.7	+89	+156	+35	+3.3	+1.83	+31	+33	+35	+1.4	+18.2	+14	+36	+80	+1.48	+1.21	+89	+84	+127	+93	+212	+339
10%	+12	-1.0	+84	+147	+33	+5.4	+1.62	+29	+37	+38	+2.2	+16.9	+13	+33	+75	+1.29	+1.09	+83	+80	+119	+83	+196	+320
15%	+11	-0.5	+81	+142	+32	+6.8	+1.48	+27	+39	+39	+2.8	+16.1	+12	+32	+71	+1.17	+1.01	+80	+76	+114	+76	+186	+307
20%	+11	-0.2	+78	+137	+31	+7.8	+1.36	+26	+41	+41	+3.2	+15.4	+12	+31	+68	+1.07	+0.95	+77	+74	+110	+71	+179	+297
25%	+10	+0.1	+76	+133	+30	+8.7	+1.27	+25	+43	+42	+3.5	+14.8	+11	+30	+65	+0.99	+0.89	+74	+72	+106	+67	+172	+289
30%	+9	+0.4	+74	+130	+29	+9.5	+1.18	+24	+44	+43	+3.9	+14.3	+10	+29	+63	+0.92	+0.85	+72	+69	+103	+64	+167	+282
35%	+8	+0.6	+72	+127	+28	+10.2	+1.10	+23	+45	+44	+4.2	+13.8	+10	+28	+60	+0.86	+0.80	+70	+67	+100	+61	+162	+276
40%	+8	+0.8	+70	+123	+28	+10.9	+1.03	+22	+47	+45	+4.5	+13.4	+9	+27	+58	+0.81	+0.76	+68	+66	+98	+58	+158	+270
45%	+7	+1.1	+69	+121	+27	+11.6	+0.96	+21	+48	+46	+4.7	+12.9	+9	+27	+56	+0.76	+0.72	+66	+64	+95	+55	+154	+265
50%	+7	+1.3	+67	+118	+27	+12.2	+0.88	+20	+49	+47	+5.0	+12.5	+9	+26	+54	+0.71	+0.68	+65	+62	+92	+53	+150	+259
55%	+6	+1.5	+65	+115	+26	+12.9	+0.81	+19	+50	+48	+5.3	+12.0	+8	+25	+52	+0.66	+0.64	+63	+60	+90	+51	+146	+254
60%	+5	+1.7	+63	+112	+25	+13.5	+0.74	+18	+51	+49	+5.6	+11.6	+8	+25	+50	+0.62	+0.60	+61	+58	+87	+49	+142	+249
65%	+5	+1.9	+62	+109	+25	+14.3	+0.67	+17	+53	+50	+5.9	+11.1	+7	+24	+48	+0.57	+0.56	+59	+56	+85	+46	+138	+243
70%	+4	+2.2	+60	+106	+24	+15.0	+0.59	+15	+54	+51	+6.2	+10.6	+6	+23	+46	+0.52	+0.52	+57	+54	+82	+44	+134	+238
75%	+3	+2.4	+58	+102	+23	+15.7	+0.50	+14	+55	+52	+6.5	+10.0	+6	+23	+44	+0.47	+0.48	+55	+52	+79	+41	+130	+231
80%	+3	+2.7	+55	+99	+22	+16.6	+0.40	+13	+57	+53	+6.9	+9.4	+5	+22	+41	+0.41	+0.43	+52	+49	+76	+39	+125	+224
85%	+2	+3.1	+53	+94	+22	+17.5	+0.29	+11	+59	+55	+7.3	+8.7	+4	+21	+38	+0.35	+0.37	+49	+47	+73	+36	+120	+216
90%	+0	+3.5	+49	+87	+20	+18.8	+0.15	+9	+61	+57	+7.9	+7.8	+3	+19	+34	+0.27	+0.30	+45	+43	+69	+32	+112	+206
95%	-2	+4.2	+43	+76	+18	+20.6	-0.07	+5	+64	+59	+8.7	+6.5	+2	+17	+28	+0.16	+0.19	+39	+37	+61	+27	+101	+189
Total Animals	162,638	164,204	164,204	164,204	99,808	99,808	106,396	101,227	100,251	100,251	98,873	98,855	162,638	164,204	106,297	106,297	106,297	163,502	138,218	138,212	138,147		
Avg	+6	+1.3	+67	+117	+27	+1.21	+0.88	+19	+49	+47	+5.0	+12.4	+8	+26	+54	+0.75	+0.69	+64	+61	+93	+55	+152	+260





**LOT 23 -
SYDGEN VERIFIED 4338**



**SYDGEN VALIDATE 2275 -
SIRE OF LOT 24**

23 SydGen Verified 4338

Birth Date: 02-19-2024 Bull #21087416 Tattoo: 4338

BW	RATIO	WW	RATIO	YW	RATIO	ADJ HIP	ADJ SC
71	104	679	106	1153	106	50.2	35.19

**HPCA Veracious
 **SydGen Mary Blackbird 8479
 **SydGen Enhance 0422
 *SydGen Forever Lady 2345
 **SydGen Forever Lady 4683
 **Mill Brae Identified 4031
 **H P C A Sunrise A246
 **H P C A Early Bird 65
 **SydGen Mary Blackbird 6802
 #SydGen Enhance
 *SydGen Rita 5730
 **G A R Prophet
 *SydGen Forever Lady 1465

SM	+85
SW	+74
SF	+111
SB	+212
SC	+360

CED	BW	WW	YW	RADG	SC	DOC	CLAW	ANGLE	HS	HP	CEM	MILK	CW	MARB	RE
+14	+8	+71	+128	+31	+81	+8	+30	+46	+46	+13.7	+12	+29	+62	+1.62	+82

Dam Progeny Record	BWR	WWR	YWR	IMF	UREA	RBFT	RPFT
Record	1-104	1-106	1-106	1-111	1-104	1-100	1-63

Sydenstricker Genetics

Complete set of data with an impressive CED, MARB, and \$C in the first son of Verified to sell. He is the top combination scanning bull from SydGen of all our February born bulls. Selling half interest and full possession.

24 SydGen Validate 4356

Birth Date: 02-22-2024 Bull #21087420 Tattoo: 4356

BW	RATIO	WW	RATIO	YW	RATIO	ADJ HIP	ADJ SC
75	108	602	94	1148	105	51.1	33.78

**HPCA Veracious
 *Smith Valley Rita 2005
 *SG Salvation
 **EXAR Blackcap Lady 1871
 **EXAR Blackcap Lady 6955
 **Mill Brae Identified 4031
 **H P C A Sunrise A246
 **Deer Valley Growth Fund
 *SydGen Rita 8105
 **Baldridge Alternative E125
 **MGR JP Rita 7037
 **EXAR Stud 4658B
 **Wild Wind Blackcap Lady 2673

SM	+75
SW	+76
SF	+130
SB	+232
SC	+376

CED	BW	WW	YW	RADG	SC	DOC	CLAW	ANGLE	HS	HP	CEM	MILK	CW	MARB	RE
+12	+8	+76	+141	+31	+15	+16	+43	+55	+59	+14.0	+9	+29	+76	+1.62	+89

Dam Progeny Record	BWR	WWR	YWR	IMF	UREA	RBFT	RPFT
Record	1-108	1-94	1-105	1-104	1-104	1-80	1-96

Sydenstricker Genetics

The first son of Validate to sell. Double digit CED, added growth, superior marbling and a big \$C.

25 SydGen Buffett 4381

Birth Date: 02-29-2024 Bull #21087426 Tattoo: 4381

BW	RATIO	WW	RATIO	YW	RATIO	ADJ HIP	ADJ SC
75	100	708	110	1204	110	50.8	39.67

**SydGen Omaha 5026
 SydGen Everelda 4134
 *MOGCK Sniper 16
 *SydGen Elba 0018
 *MOGCK Elba 1488
 **EXAR Denver 2002B
 *SydGen Entense 1120
 *SydGen 5420 Destination 1315
 +SydGen Everelda 0620
 #MOGCK Sure Shot
 *Mogck Miss 1274
 *SydGen Enhance
 #Mogck Elba 573

SM	+45
SW	+68
SF	+99
SB	+138
SC	+224

CED	BW	WW	YW	RADG	SC	DOC	CLAW	ANGLE	HS	HP	CEM	MILK	CW	MARB	RE
+8	+2.3	+76	+139	+29	+1.42	+16	+50	+50	+69	+9.1	+8	+30	+61	+32	+72

Dam Progeny Record	BWR	WWR	YWR	IMF	UREA	RBFT	RPFT
Record	2-99	2-116	2-111	2-81	2-98	2-97	2-96

Sydenstricker Genetics

A nice Buffett son that is in the top 25% or better for WW, YW, SC, and Milk and still safe for heifers.

Performance Information

The EPDs printed are all from the Fall 2024 Sire Evaluation Report.

Progeny ratios are printed on cows as of October 1. (Example: BWR 6-103, WWR 6-102, YWR 3-104 means the cow has six calves weaned or recorded with an average weaning ratio of 102, those 6 calves had an average birth weight ratio of 103, and three of those had yearling weights turned in with an average ratio of 104.)

We print ratios because many of our customers like to see them. But because of differences in the performance levels between herds and contemporary groups, and a multitude of factors that can affect any one individual weight (which is the basis for the ratio), EPDs HAVE BEEN SHOWN TO BE AS MUCH AS NINE TIMES MORE ACCURATE THAN RATIOS AS A SELECTION TOOL.

(Consider the three to four hours that it takes to weigh and vaccinate a set of 110 bull calves on weaning day. There will be considerable difference in fill between the first calves weighed and the last calves weighed.)

All spring calves in this sale have had birth and weaning weights processed through AHIR, and the EPDs printed reflect that data. Data from those calves has been used to update the progeny ratios of their dams, where applicable. No spring bull calves born after February 10 will be in this sale offering.

Also on sale day, we will furnish current weight, frame score, average daily gain, and projected yearling weights on the spring bull calves. Projected yearling weights are calculated by multiplying their post-weaning ADG by 160, and adding that result to their adj. 205-day weight. This is not an official 365-day weight.

In this catalog, you will see ratios for BW, WW, and YW on some of the ET calves. The Association is supplying this information, and adjusting the interim EPDs accordingly, for those calves born out of registered Angus recipient cows. This methodology is called the three parent model, due to the two genetic parents and the influence of the environmental parent, the recipient dam. These ratios are determined within their weaning contemporary group and within those ET calves raised by registered Angus recipients, after adjustment for age of dam. This may be confusing at times, especially when some calves within a flush were raised by a registered Angus recipient and some were not.

ET calves raised by commercial recipients and those produced by IVF, will still carry EPDs that are the average of their sire and dam, and are lower accuracy than their counter-parts raised by a registered Angus cow.

Cowboy Logic #90

Many of us have a predisposed notion that we want calving ease/low BW herd sires. But, in the Angus breed, do we really have that much problem with big calves? It seems like most of the problems at birth are more linked to abnormal presentations than actual calves that are too big for the cow or even heifer. And, it seemed like maybe those smaller calves just were not as thrifty. We decided to see if we could dig into the data, and see what survivability to weaning really looked like. After all, a small calf at birth doesn't really help the bottom line if he dies prior to weaning anyway!

We divided up four years of spring calf crops into three groups: (light) 69 lbs. or less; (medium) 70-89 lbs.; and (heavy) 90 lbs. and up. We edited out any abortions and all twins. In a nutshell, the death loss at birth through weaning was twice as high on the light calves as it was on the medium calves. The death loss on the heavy calves was the least of the three groups, and it was the least in every one of the four years. We did not differentiate according to cause of death, or whether it was right at birth or later on pre-weaning.

We've all heard someone say the growth rate of a dead calf is distressingly poor, and took that to mean we needed lighter calves at birth so we would get more of them born alive. Every operation is different, but it certainly appears to us that bigger calves at birth are more likely to still be around at weaning. We would never advocate breeding heifers to anything but a true heifer bull, but our cowherds might be much better served by sires that give their calves more of a head start.

A study by the University of Illinois on Sim-Angus cattle reported the same conclusions.



SydGen Loyalty 4238

Birth Date: 02-02-2024 Bull #21087395 Tattoo: 4238

BW	RATIO	WW	RATIO	YW	RATIO	ADJ HIP	ADJ SC
80	105	702	109	1070	98	49.7	33.62

+*Worthington Loyalty
 #*S S Niagara Z29
 #*G A R Sure Fire 3697



2 S Top Ten
 2 S 1522 Erica 1433-1743
 2 S 1026 Erica 809-1433

#*Hoover Dam
 Jet S S X144
 #*G A R Sure Fire
 #*G A R Prophet F174
 #*A A R Ten X 7008 S A
 2 S 16 Promptitude 538-1231
 +2 S Roundup 1678-1026
 2 S 338 Erica 952-809

SM	+53
SW	+75
SF	+109
SB	+174
SC	+279

CED	BW	WW	YW	RADG	SC	DOC	CLAW	ANGLE	HS	HP	CEM	MILK	CW	MARB	RE
+5	+8	+76	+134	+30	+56	+24	+50	+49	+44	+10.6	+6	+31	+66	+81	+93

Dam Progeny Record	BWR	WWR	YWR	IMF	UREA	RBFT	RPFT
6-104	5-104	3-102	3-76	3-105	3-63	3-60	

Sydenstricker Genetics

Son of the \$20,500 Loyalty, top-selling bull in the 2022 Worthington Angus production sale, out of a cow with a solid progeny record.



WORTHINGTON LOYALTY - SIRE OF LOTS 26 & 27



HPCA EARLY BIRD 65 - SIRE OF LOTS 28 & 29



SydGen Loyalty 4312

Birth Date: 02-14-2024 Bull #21087409 Tattoo: 4312

BW	RATIO	WW	RATIO	YW	RATIO	ADJ HIP	ADJ SC
83	109	705	110	1233	113	51.0	34.03

+*Worthington Loyalty
 #*S S Niagara Z29
 #*G A R Sure Fire 3697



*SydGen Expansion 5917
 *SydGen Entense 9314
 *SydGen Entense 6376

#*Hoover Dam
 Jet S S X144
 #*G A R Sure Fire
 #*G A R Prophet F174
 *SydGen Express 3487B
 *SydGen Envious Blackbird 102
 #*SydGen FATE 2800
 *SydGen Entense 9237

SM	+78
SW	+85
SF	+115
SB	+164
SC	+291

CED	BW	WW	YW	RADG	SC	DOC	CLAW	ANGLE	HS	HP	CEM	MILK	CW	MARB	RE
+4	+2.5	+89	+157	+30	+69	+32	+48	+39	+38	+9.9	+10	+31	+75	+54	+73

Dam Progeny Record	BWR	WWR	YWR	IMF	UREA	RBFT	RPFT
3-102	3-104	3-105	2-76	2-103	2-94	2-111	

Sydenstricker Genetics

Powerful growth EPDs in this Loyalty son with a negative PAP EPD.



SydGen Notice 4285

Birth Date: 02-11-2024 Bull #21087403 Tattoo: 4285

BW	RATIO	WW	RATIO	YW	RATIO	ADJ HIP	ADJ SC
78	103	730	114	1135	104	50.9	37.40

+*Huwa Notice 0443
 #*Hoover Know How
 #*Huwa 2902 Payweight 6017



*SydGen Rock Star 3461
 SydGen Royal Lass 8616
 +SydGen Royal Lass 8634

#*Hoover No Doubt
 #Bkcp Empress Ellston L265
 #*Basin Payweight 1682
 Goode Prophet 2902
 +SydGen Rocky Road 2060
 +SydGen Forever Lady 8420
 #*SydGen 1407 Corona 2016
 +S A F Royal Lass 1002

SM	+45
SW	+59
SF	+108
SB	+181
SC	+280

CED	BW	WW	YW	RADG	SC	DOC	CLAW	ANGLE	HS	HP	CEM	MILK	CW	MARB	RE
+10	+8	+69	+127	+33	+1.17	+7	+4.7	+4.9	+4.9	+11.7	+16	+23	+57	+1.10	+7.2

Dam Progeny Record	BWR	WWR	YWR	IMF	UREA	RBFT	RPFT
4-101	4-107	4-105	4-94	4-111	4-88	4-95	

Sydenstricker Genetics

Notice son that's safe for heifers with Marbling in the top 20%. Powerful bottom-side pedigree with some SydGen greats.



ESF Early Bird J117

Birth Date: 09-16-2023 Bull 20954367 Tattoo: J117

BW	RATIO	WW	RATIO	YW	RATIO	ADJ HIP	ADJ SC
55	90	759	95	1199	96	50.3	

+*H P C A Early Bird 65
 #*G A R Early Bird
 #*H P C A 5050 G191



ESF Lady Luck J016
 #SydGen Enhance
 +ESF Lady Luck J437 J646

+*G A R Daylight
 +*G A R Progress 830
 #*G A R New Design 5050
 #*H P C A Objective A729
 #*SydGen Exceed 3223
 SydGen Rita 2618
 #*SydGen Dealer 9883
 #ESF Lady Luck J437

SM	+66
SW	+47
SF	+103
SB	+180
SC	+299

CED	BW	WW	YW	RADG	SC	DOC	CLAW	ANGLE	HS	HP	CEM	MILK	CW	MARB	RE
+14	-2.4	+45	+91	+29	+25	+20	+4.8	+4.7	+3.9	+17.3	+13	+28	+43	+1.13	+7.2

Dam Progeny Record	BWR	WWR	YWR	IMF	UREA	RBFT	RPFT
1-90	1-95	1-96	1-82	1-101	1-92	1-95	

Eggers Stock Farm

Aged bull with double-digit CED and extra Marbling like you'd expect from an Early Bird son.



SydGen Early Bird 4241

Birth Date: 02-02-2024 Bull #21087396 Tattoo: 4241

BW	RATIO	WW	RATIO	YW	RATIO	ADJ HIP	ADJ SC
84	112	721	112	1203	110	50.2	36.30

+*H P C A Early Bird 65
 #*G A R Early Bird
 #*H P C A 5050 G191



#*SydGen Rita 0035
 #SydGen Enhance
 +*LHR-BAR Rita 1682-7222

+*G A R Daylight
 +*G A R Progress 830
 #*G A R New Design 5050
 #*H P C A Objective A729
 #*SydGen Exceed 3223
 SydGen Rita 2618
 #*Basin Payweight 1682
 +*G A R 5050 New Design 1782

SM	+75
SW	+75
SF	+123
SB	+204
SC	+340

CED	BW	WW	YW	RADG	SC	DOC	CLAW	ANGLE	HS	HP	CEM	MILK	CW	MARB	RE
+7	+1.8	+73	+136	+33	+21	+26	+4.6	+4.5	+7.4	+12.7	+10	+35	+72	+1.20	+8.5

Dam Progeny Record	BWR	WWR	YWR	IMF	UREA	RBFT	RPFT
3-106	3-111	3-111	3-128	3-98	3-99	3-121	

Sydenstricker Genetics

Excellent structure and eye appeal along with solid growth and carcass traits resulting in an upper tier \$C with added Milk. Selling half interest and full possession.

Tips on Using Yearling Bulls

Yearling bulls have many advantages: fresher genetics, better selection, etc. Studies have shown bulls used as yearlings sire more calves in their lifetime than bulls held until they are two. Also, buyers who manage them well can often re-sell them as three or four-year-olds and recover much of their purchase price.

A few tips from our experience:

If your group has too many cows or heifers for one yearling bull (we suggest 10-15), don't put all the bulls out at the start of the season. If you turn them all out at once, they are likely to all lose weight and perhaps all go temporarily sterile at the same time. If you have two bulls, put one in for two weeks, then pull him and turn out the other one. The forced rest and a little feed and fly control will make him stronger. Using the every two week rotation, if one bull is a stronger breeder, he will always be covering what the other bull missed. Furthermore, running multiple bulls in the Midwest often results in broken penises; its just different out West where the pastures are so much larger.

A yearling bull should not be out in a Missouri pasture from mid-July through August. Bulls generally shed their first two incisors about 18-20 months of age. That combined with fescue endophyte and heat stress could cause the bull to get so nutritionally stressed that it will take a long time to get him back in shape.



GAR VERIFIED 2683 - SIRE OF LOT 23



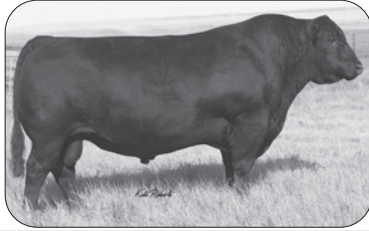


SydGen Enhance

Birth Date: 01-27-2015

Bull #18170041

Tattoo: 5209



REFERENCE SIRE

Claw	Angle	HS
+39	+57	+30
RADG	YW	
+34	+8	
HP	DOC	
+12.1	+33	

SM	+67
CW	+50
MARB	+1.20
RE	+60
FAT	-.012
SW	+75
SF	+97
SB	+178
SC	+298

CED	BW	WW	YW	SC	MILK	MW
+7	+6	+69	+133	+1.39	+28	+73

The bull that defined the \$Combination index with his first calf crops. Recently deceased, he is the most highly proven sire in the breed, with over \$4.5M semen and certificate revenue.



WAF Elevate L265

Birth Date: 09-28-2023

Bull 20972058

Tattoo: L265

BW	RATIO	WW	RATIO	YW	RATIO	ADJ HIP	ADJ SC
72	104	554	89	983	91	49.9	33.28

ESF Enhance J953	#SydGen Enhance	#SydGen Exceed 3223	SM	+73
	+ESF Lady Luck J686	SydGen Rita 2618	SW	+61
		#SydGen Trust 6228	SF	+88
		#ESF Lady Luck J437	SB	+141
			SC	+256



SydGen Enchantress 5066	**SydGen Dealer 9883	SydGen Sure Bet	CED	BW	WW	YW	RADG	SC	DOC	CLAW	ANGLE	HS	HP	CEM	MILK	CW	MARB	RE
	+SydGen Enchantress 9407	+SydGen Forever Lady 4413	+13	-2.4	+45	+93	+27	+61	+29	+35	+54	+24	+12.7	+9	+44	+42	+76	+41
Dam Progeny Record	BWR	WWR	YWR	IMF	UREA	RBFT	RPFT											
	8-104	7-101	5-104	5-87	5-102	5-98	5-90											

Wallis Angus Farms

Another sleep all night heifer bull sired by a good Enhance son. Note his Milk, Doc, Claw, and HS EPDs.



ESF Enhance J114

Birth Date: 09-16-2023

Bull 20954358

Tattoo: J114

BW	RATIO	WW	RATIO	YW	RATIO	ADJ HIP	ADJ SC
72	103	823	108	1309	105	51.8	

#SydGen Enhance

#*SydGen Exceed 3223
SydGen Rita 2618



+ESF Lady Luck J686

#*SydGen Trust 6228
#ESF Lady Luck J437

#*SydGen Googol
**SydGen Forever Lady 1255
**SydGen Liberty GA 8627
#Fox Run Rita 9308

*SCR Promise 4042
+SydGen Forever Lady 4413
+ESF 8180 1457
ESF Lady Luck J327

SM	+53
SW	+61
SF	+81
SB	+142
SC	+237

CED	BW	WW	YW	RADG	SC	DOC	CLAW	ANGLE	HS	HP	CEM	MILK	CW	MARB	RE
+4	+1.4	+61	+119	+32	+1.40	+28	+46	+55	+27	+13.9	+6	+36	+38	+92	+23

Dam Progeny Record	BWR	WWR	YWR	IMF	UREA	RBFT	RPFT
	8-103	8-99	6-99	5-103	5-99	5-119	5-107

Eggers Stock Farm

Enhance son that should sire calves that are slick-haired and gentle.



SydGen Exceed 4334

Birth Date: 02-18-2024

Bull #21087414

Tattoo: 4334

BW	RATIO	WW	RATIO	YW	RATIO	ADJ HIP	ADJ SC
66	88	596	93	1010	92	49.1	37.82

#*SydGen Exceed 3223	#*SydGen Googol	D A R Infinity 313	SM	+84
	+*SydGen Forever Lady 1255	SydGen Forever Lady 4087	SW	+65
		#*SydGen 928 Destination 5420	SF	+97
		SydGen Forever Lady 8114	SB	+178
			SC	+315



*Pollard Rita 0128

#*Bar R Jet Black 5063
*Pollard Rita 8435

CED	BW	WW	YW	RADG	SC	DOC	CLAW	ANGLE	HS	HP	CEM	MILK	CW	MARB	RE
+11	+1.4	+55	+103	+29	+2.20	+23	+48	+50	+54	+12.3	+11	+35	+44	+1.19	+76

Dam Progeny Record	BWR	WWR	YWR	IMF	UREA	RBFT	RPFT
	3-105	3-93	2-91	1-122	1-91	1-88	1-119

Syden-Stricker Genetics

Show-Me Select qualified heifer bull with impressive SC, Milk, Marb, \$M, and \$C figures.



BCA Enhance 4045

Birth Date: 03-04-2024

Bull #21054235

Tattoo: 4045

BW	RATIO	WW	RATIO	YW	RATIO	ADJ HIP	ADJ SC
82	93	609	94	1153	99	50.6	39.58

#SydGen Enhance

#*SydGen Exceed 3223
SydGen Rita 2618



*BCA Primrose 7105

*BCA Jack Black 4112
*BCA Primrose 4120

#*SydGen Googol
**SydGen Forever Lady 1255
**SydGen Liberty GA 8627
#Fox Run Rita 9308

#*SydGen 928 Destination 5420
SydGen Anita 8611
**SydGen FATE 2800
*SydGen Primrose 2681

SM	+55
SW	+69
SF	+113
SB	+189
SC	+300

CED	BW	WW	YW	RADG	SC	DOC	CLAW	ANGLE	HS	HP	CEM	MILK	CW	MARB	RE
+6	+5	+63	+117	+28	+1.80	+6	+49	+60	+32	+14.1	+14	+39	+61	+1.12	+57

Dam Progeny Record	BWR	WWR	YWR	IMF	UREA	RBFT	RPFT
	6-93	6-97	2-94	2-95	2-92	2-94	2-77

Blair Carney Angus

Balanced-trait son of Enhance that reads especially strong for SC, CEM, and Milk.



SydGen True North 3052

Birth Date: 01-03-2023

Bull #*20715104

Tattoo: 3052

BW	RATIO	WW	RATIO	YW	RATIO	ADJ HIP	ADJ SC
98	100	693	100	1323	100	50.8	40.00

**Square B True North 8052	#*S A V Rainfall 6846	#*Coleman Charlo 0256	SM	+88
	Elbanna of Conanga 1209	*S A V Blackcap May 4136	SW	+74
		#*Connealy Consensus	SF	+73
		Elbasta of Conanga 9703	SB	+143
			SC	+273



*SydGen Primrose 9025

#*SydGen Enhance
#*SydGen Primrose 6220

CED	BW	WW	YW	RADG	SC	DOC	CLAW	ANGLE	HS	HP	CEM	MILK	CW	MARB	RE
+13	-1.7	+60	+111	+25	+1.10	+31	+35	+44	+42	+14.1	+12	+38	+40	+92	+87

Dam Progeny Record	BWR	WWR	YWR	IMF	UREA	RBFT	RPFT
	4-102	2-105	2-99	5-111	5-97	5-100	5-97

Curtis & Michelle Smith

A son of the popular ABS sire, True North, with double-digit CED and upper percentile rankings for Milk, Doc, Claw, and \$M.



WAF Elevate L240

Birth Date: 09-21-2023

Bull #20972059

Tattoo: L240

BW	RATIO	WW	RATIO	YW	RATIO	ADJ HIP	ADJ SC
63	91	601	97	1022	95	49.3	35.04

ESF Enhance J953

#SydGen Enhance
+ESF Lady Luck J686



+*SydGen Lucy 6061

*B A R Decision 3320-7229
+SydGen Lucy 9424

#*SydGen Exceed 3223
SydGen Rita 2618
#*SydGen Trust 6228
#ESF Lady Luck J437

#*Connealy Consensus 7229
B A R Heroine 1250-454
#SydGen Contact
+Basin Lucy 1736

SM	+60
SW	+56
SF	+91
SB	+167
SC	+277

CED	BW	WW	YW	RADG	SC	DOC	CLAW	ANGLE	HS	HP	CEM	MILK	CW	MARB	RE
+14	-1.7	+44	+78	+21	+51	+26	+50	+52	+57	+12.9	+7	+37	+39	+1.23	+45

Dam Progeny Record	BWR	WWR	YWR	IMF	UREA	RBFT	RPFT
	7-99	6-101	4-99	4-105	4-100	4-91	4-114

Wallis Angus Farms

Sure sing calving ease, extra Marbling, and a top 1% DMI EPD in this Enhance grandson.



BCA Quantum 2043 4049

Birth Date: 03-05-2024

Bull #21053881

Tattoo: 4049

BW	RATIO	WW	RATIO	YW	RATIO	ADJ HIP	ADJ SC
72	87	721	101	1187	95	52.6	40.11

BCA Quantum 2043	#*G A R Quantum	#*G A R Momentum	SM	+43
	Bca Miss Bush 0427	+*G A R In Sure 1524	SW	+64
		#*SydGen Trust 6228	SF	+106
		#CFL Miss Bush 6427	SB	+191
			SC	+291



+*BCA Mary Blackbird 8081

#*SydGen Exceed 3223
*Tehama Mary Blackbird B244

CED	BW	WW	YW	RADG	SC	DOC	CLAW	ANGLE	HS	HP	CEM	MILK	CW	MARB	RE
+9	-.1	+58	+103	+27	+98	+19	+42	+63	+66	+6.8	+7	+34	+53	+1.22	+95

Dam Progeny Record	BWR	WWR	YWR	IMF	UREA	RBFT	RPFT
	5-90	4-98	4-97	5-108	5-103	5-100	5-108

Blair Carney Angus

The Mary Blackbird line of cows have been excellent producers at BCA and SydGen. Here's a heifer bull that will add Milk and improve carcass traits.





SYDGEN JEREMIAH 8360 - SIRE OF LOTS 39 & 40



ECO LOMBARDI 1512 - PATERNAL GRANDSIRE OF LOT 41

SYDGEN BLACK PEARL 2006 - SIRE OF LOT 38



CONNELY COOL 39L - SIRE OF LOTS 42 & 43



38 BCA Black Pearl 4007

Birth Date: 01-30-2024 Bull *21054153 Tattoo: 4007

BW	RATIO	WW	RATIO	YW	RATIO	ADJ HIP	ADJ SC
65	95	686	104	1158	100	50.6	38.01

AngusGS
#**SydGen Black Pearl 2006
SydGen Anita 8611

*SCR Promise 4042
*SydGen Forever Lady 4413
*Connely Forward
#*Three Trees Anita 5133

SM	+55
SW	+73
SF	+101
SB	+194
SC	+307

*SydGen II Lombardi 9045
*BCA Mary Blackbird 2046
**BCA Mary Blackbird 9138

*ECO Lombardi 1512
Indian Springs Lucy 885
#SydGen Enhance
BCA Mary Blackbird 5119

CED	BW	WW	YW	RADG	SC	DOC	CLAW	ANGLE	HS	HP	CEM	MILK	CW	MARB	RE
+10	+1.2	+73	+127	+31	+99	+22	+40	+50	+56	+8.3	+11	+31	+57	+1.48	+62
Dam Progeny Record	BWR	WWR	YWR	IMF	UREA	RBFT	RPFT								
	1-95	1-104	1-100	1-114	1-100	1-114	1-100								

Blair Carney Angus
Balanced-trait Black Pearl son out of a Vince daughter that's a complete package, and safe for heifers.

41 ESF Vince J133

Birth Date: 10-15-2023 Bull 20954379 Tattoo: J133

BW	RATIO	WW	RATIO	YW	RATIO	ADJ HIP	ADJ SC
83	123	928	116	1362	109	53.6	

AngusGS
*SydGen II Lombardi 9045
Indian Springs Lucy 885

*ECO Lombardi 1512
*RV A R Discovery 2240
*RB Lady 7125-890-2170
*Jindra Double Vision
+ISA Lucy A369

SM	+51
SW	+64
SF	+93
SB	+151
SC	+247

*ESF Lady Luck J965
*SydGen Liberty GA 8627
*ESF Lady Luck J437

*SydGen Blackbird GA 051
+ESF 8180 1457
ESF Lady Luck J327

CED	BW	WW	YW	RADG	SC	DOC	CLAW	ANGLE	HS	HP	CEM	MILK	CW	MARB	RE
-1	+4.1	+83	+146	+30	+93	+16	+40	+53	+59	+14.6	+5	+26	+57	+7.7	+51
Dam Progeny Record	BWR	WWR	YWR	IMF	UREA	RBFT	RPFT								
	2-112	2-109	2-106	2-93	2-99	2-98	2-103								

Eggers Stock Farm
A "Vince" son that will add frame and pounds to your calf crop.

39 SydGen 8360 Jeremiah 4278

Birth Date: 02-09-2024 Bull *21087400 Tattoo: 4278

BW	RATIO	WW	RATIO	YW	RATIO	ADJ HIP	ADJ SC
76	100	670	104	1166	106	49.2	36.87

AngusGS
*SydGen Jeremiah 8360
*SydGen Dixie Erica 5104

*BCA Jeremiah 5103
**G A R Prophet
SydGen Anita 8611
**SydGen FATE 2800
Werner Dixie Erica 3045

SM	+87
SW	+83
SF	+92
SB	+158
SC	+292

*Riverbend Lucy G142
**Woodside Rito 4P26 of 0242
**Riverbend Lucy A608

*G A R Prophet
+Rita 0242 of Rita 7068 5M2
**Riverbend Peerless 0016
**Basin Lucy S161

CED	BW	WW	YW	RADG	SC	DOC	CLAW	ANGLE	HS	HP	CEM	MILK	CW	MARB	RE
+10	+1.5	+80	+140	+26	+64	+20	+63	+65	+67	+16.8	+12	+28	+58	+9.2	+86
Dam Progeny Record	BWR	WWR	YWR	IMF	UREA	RBFT	RPFT								
	4-101	4-99	4-94	4-108	4-101	4-97	4-100								

Sydenstricker Genetics
Sired by the bull known as "Bullfrog" that's Show-Me Select qualified with \$M and \$W indexes in the top 10%.

42 WAF Cool L01

Birth Date: 08-25-2023 Bull *20972060 Tattoo: L01

BW	RATIO	WW	RATIO	YW	RATIO	ADJ HIP	ADJ SC
70	101	672	108	1067	99	48.6	35.71

AngusGS
#Connely Cool 39L

#Connely Heat 0243
**JMc Jeena Allie 8345 5399
Jeena of Conanga 357

SM	+80
SW	+59
SF	+118
SB	+174
SC	+306

WAF Destiny F01
McCF Blackcap WP A957

*SydGen Trust 6228
*SydGen Heroine 9808
**Werner War Party 2417
Fox Run Blackcap 9357

CED	BW	WW	YW	RADG	SC	DOC	CLAW	ANGLE	HS	HP	CEM	MILK	CW	MARB	RE
+13	+0	+61	+115	+28	+1.86	+30	+36	+44	+58	+16.8	+12	+27	+61	+5.9	+1.06
Dam Progeny Record	BWR	WWR	YWR	IMF	UREA	RBFT	RPFT								
	3-97	3-103	2-100	2-72	2-97	2-72	2-78								

Wallis Angus Farms
Cool son that excels for SC, HP, Doc, Claw, and RE that's safe for heifers.

40 SydGen 8360 Jeremiah 4346

Birth Date: 02-20-2024 Bull 21087418 Tattoo: 4346

BW	RATIO	WW	RATIO	YW	RATIO	ADJ HIP	ADJ SC
82	108	729	114	1222	112	50.2	33.71

AngusGS
*SydGen Jeremiah 8360
*SydGen Dixie Erica 5104

*BCA Jeremiah 5103
**G A R Prophet
SydGen Anita 8611
**SydGen FATE 2800
Werner Dixie Erica 3045

SM	+80
SW	+77
SF	+116
SB	+177
SC	+310

SydGen Estelle 5038
**SydGen Black Pearl 2006
SydGen Estelle 7086

*SydGen Trust 6228
SydGen Anita 8611
Spur Success 2801
SydGen Estelle 4129

CED	BW	WW	YW	RADG	SC	DOC	CLAW	ANGLE	HS	HP	CEM	MILK	CW	MARB	RE
+9	+9	+65	+124	+28	+15	+14	+55	+65	+64	+15.7	+12	+42	+68	+8.5	+87
Dam Progeny Record	BWR	WWR	YWR	IMF	UREA	RBFT	RPFT								
	7-111	7-109	6-104	6-100	6-102	6-130	6-128								

Sydenstricker Genetics
Another Bullfrog son out of a rock-solid Black Pearl daughter.

43 WAF Cool L06

Birth Date: 08-27-2023 Bull *20972063 Tattoo: L06

BW	RATIO	WW	RATIO	YW	RATIO	ADJ HIP	ADJ SC
71	107	722	116	1244	115	49.4	39.76

AngusGS
#Connely Cool 39L

#Connely Heat 0243
**JMc Jeena Allie 8345 5399
Jeena of Conanga 357

SM	+61
SW	+56
SF	+118
SB	+187
SC	+304

*SydGen Big Branch 6653
*WAF Roseanne H06
*WAF Sure Fire D06

*BCA Jack Black 4112
*SydGen Roseanne 3346
**G A R Sure Fire
H P C A High Value S174

CED	BW	WW	YW	RADG	SC	DOC	CLAW	ANGLE	HS	HP	CEM	MILK	CW	MARB	RE
+11	+2	+67	+117	+23	+1.63	+25	+46	+41	+46	+15.4	+11	+20	+64	+1.00	+86
Dam Progeny Record	BWR	WWR	YWR	IMF	UREA	RBFT	RPFT								
	3-101	2-114	2-109	2-148	2-108	2-162	2-118								

Wallis Angus Farms
Heifer bull sired by Cool with a no-holes set of EPDs.



**B A R SEQUENCE 1840 -
SIRE OF LOT 46**

**SYDGEN STEALTH 8556 -
SIRE OF LOTS 44 & 45**



47 BCA Sequence 4046

Birth Date: 03-04-2024 Bull #21053879 Tattoo: 4046

BW	RATIO	WW	RATIO	YW	RATIO	ADJ HIP	ADJ SC
68	88	660	100	1097	95	50.6	38.11

**B A R Sequence 1840		*K C F Bennett Exponential		#*Casino Bomber N33		SM	+51
		*G A R Trust F784		#*K C F Miss Southside B226		SW	+56
				#*SydGen Trust 6228		SF	+127
				*G A R Ambush 0H03		SB	+221
				#*SydGen Exceed 3223		SC	+338
				SydGen Rita 2618			
				BC Trust 1626			
				*BCA Mary Blackbird 2742			

CED	BW	WW	YW	RADG	SC	DOC	CLAW	ANGLE	HS	HP	CEM	MILK	CW	MARB	RE
+7	+9	+74	+139	+37	+61	+19	+38	+52	+41	+15.1	+5	+18	+68	+1.48	+69

Blair Carney Angus
Balanced-trait Sequence son with extra Marbling and an impressive \$C.

44 ESF Stealth J118

Birth Date: 09-17-2023 Bull 20954356 Tattoo: J118

BW	RATIO	WW	RATIO	YW	RATIO	ADJ HIP	ADJ SC
75	107	828	109	1297	104	52.3	

*SydGen Stealth 8556		#*Casino Bomber N33		#*KM Broken Bow 002		SM	+52
		*OSU Empress 5136		#*Casino Annie K48		SW	+67
				#*Barstow Cash		SF	+113
				*OSU Everelda Entense 3164		SB	+186
				#SCR Promise 4042		SC	+293
				+SydGen Forever Lady 4413			
				+ESF 8180 1457			
				ESF Lady Luck J327			

CED	BW	WW	YW	RADG	SC	DOC	CLAW	ANGLE	HS	HP	CEM	MILK	CW	MARB	RE
+5	-7	+65	+112	+25	+1.10	+18	+54	+53	+59	+15.5	+7	+31	+59	+1.16	+48

Eggers Stock Farm
A good son of Stealth with a Marbling EPD in the top 20% of the breed.

45 ESF Stealth J119

Birth Date: 09-17-2023 Bull 20954372 Tattoo: J119

BW	RATIO	WW	RATIO	YW	RATIO	ADJ HIP	ADJ SC
73	104	801	105	1278	103	52.3	

*SydGen Stealth 8556		#*Casino Bomber N33		#*KM Broken Bow 002		SM	+76
		*OSU Empress 5136		#*Casino Annie K48		SW	+63
				#*Barstow Cash		SF	+102
				*OSU Everelda Entense 3164		SB	+167
				#*SydGen Exceed 3223		SC	+293
				SydGen Rita 2618			
				#*SydGen Dealer 9883			
				+ESF Lady Luck J437			

CED	BW	WW	YW	RADG	SC	DOC	CLAW	ANGLE	HS	HP	CEM	MILK	CW	MARB	RE
+12	-1.6	+58	+109	+28	+1.03	+25	+35	+54	+62	+16.7	+11	+31	+50	+83	+67

Eggers Stock Farm
Show-Me Select qualified Stealth son that should leave a nice set of daughters behind. Seven flush sisters to the grandam have been in production at ESF, and a flush brother has served well at Flickerwood Angus.

46 BCA Sequence 4026

Birth Date: 02-21-2024 Bull #21053872 Tattoo: 4026

BW	RATIO	WW	RATIO	YW	RATIO	ADJ HIP	ADJ SC
83	109	692	105	1206	104	53.2	39.61

**B A R Sequence 1840		*K C F Bennett Exponential		#*Casino Bomber N33		SM	+32
		*G A R Trust F784		#*K C F Miss Southside B226		SW	+52
				#*SydGen Trust 6228		SF	+109
				*G A R Ambush 0H03		SB	+174
				#B/R Destination 727-928		SC	+258
				+Shady Brook Entense 76D 29H			
				#Tehama 717 Band 876			
				*Tehama Mary Blackbird L143			

CED	BW	WW	YW	RADG	SC	DOC	CLAW	ANGLE	HS	HP	CEM	MILK	CW	MARB	RE
+2	+3.7	+82	+139	+33	+4.0	+2	+4.8	+4.0	+4.0	+15.4	+6	+15	+63	+6.9	+82

Blair Carney Angus
The first sons of Sequence are offered today. This one is sure to add some size and scale to your calves. Dam has produced some of the most popular bulls in previous Influence Sales.

CED vs. BW

Which number should one consider strongest when purchasing a bull to use on virgin heifers?

This question comes up often in discussions. If you talk to a geneticist, CED is always the answer, because calving ease is what you are looking for, and that is the actual trait reflected by a CED EPD. Birth Weight (BW) is an indicator trait, but not the actual trait of economic importance.

However, one thing we think about pretty often is the fact that a lot more data affects the BW EPD than the CED EPD. First of all, CED EPD is based only on pulls and unassisted births out of first calf heifers. No data from second-calvers and older is counted at all. Secondly, if all the calves are born unassisted, it does not affect the CED of any of the sires, other than the influence of the birthweights on the BW EPD, which would have some correlated effect on CED

EPD. That would mean most of the data from small herds would count very little, since the odds of pulling a calf on a small number of heifers is very small. Also, no pulls on ET calves are counted. In the big scheme of things, the number of pulls turned in is a pretty small number, and it seems to us that it could skew the CED EPD pretty strongly in either direction in a good luck/bad luck scenario.

Birth weights, on the other hand, are generally turned in, and processed, on a very high percentage of calves turned in on AHIR. Sire summary supplemental information shows over 5 times as many birthweights reported as there are calving ease scores.

Results of the MCA Profitability Challenge

2024 marked the fifth year of the Missouri Cattlemen's Association Profitability Challenge. We are proud to have placed second and third in this year's contest, holding our own in this unique contest that measures all feed consumed, treatment costs and harvest value for an accurate assessment of the profitability of the steers in the contest. The contest is held at the University of Missouri South Farm, and uses the GrowSafe system to measure feed intake.

We placed first in 2020 with a son of SydGen Wake Up Call 9446, second in 2021 with a son of SydGen Exceed 3223, fourth in 2022 with a son of SydGen Wake Up Call 9253 and third in 2023 with a son of De-Su Volunteer B122.

We are the only breeder to have had a Top Five placing in every year of the contest. This year, our calves were sired by HPCA Early Bird 65 and SydGen Faith GA 0808. Both were from the Forever Lady family, and one was a grandson of SydGen Forever Lady 1255, the dam of SydGen Exceed 3223, who also sired the top-placing calf in the 2023 contest for Briarwood Farms.



**BALDRIDGE VERSATILE -
SIRE OF LOTS 48, 49, & 50**



**LOT 49 -
AJC VERSATILE 3L**



**LOT 50 -
AJC VERSATILE 5L**



**LOT 48 -
AJC VERSATILE 1L**

48 AJC Versatile 1L

Birth Date: 04-06-2023 Bull #*20635197 Tattoo: 1L

BW	RATIO	WW	RATIO	YW	RATIO	ADJ HIP	ADJ SC
84	100	725	100	1119	100		

****Baldridge Versatile**
****Baldridge Forecaster B160**
Baldridge Blackbird A030
***S S Enforcer E812**
***SydGen Butter Fly 0426**
***Spruce Mtn Butter Fly 8574**

##*G A R Prophet
Baldridge Pratissa W165
****Hoover Dam**
Baldridge Blackbird X89
#SydGen Enhance
#S S Miss Daybreak K011 3K17
#Diablo Deluxe 1104
***Boyd/Myers Butter Fly M236**

SM	+59
SW	+79
SF	+79
SB	+153
SC	+257

CED	BW	WW	YW	RADG	SC	DOC	CLAW	ANGLE	HS	HP	CEM	MILK	CW	MARB	RE
+8	+0	+88	+147	+27	+01	+36	+59	+65	+28	+11.1	+2	+18	+49	+1.03	+67

Dam Progeny Record	BWR	WWR	YWR	IMF	UREA	RBFT	RPFT

AJC Angus
The first of three age-advantaged flush brothers by the \$250,000 Baldridge Versatile, a proven source of high marbling genetics in the breed today, being out of the A030 cow with over \$1M in progeny sales.

50 AJC Versatile 5L

Birth Date: 04-10-2023 Bull #*20635201 Tattoo: 5L

BW	RATIO	WW	RATIO	YW	RATIO	ADJ HIP	ADJ SC
70	100	585	100	1163	100		

****Baldridge Versatile**
****Baldridge Forecaster B160**
Baldridge Blackbird A030
***S S Enforcer E812**
***SydGen Butter Fly 0426**
***Spruce Mtn Butter Fly 8574**

##*G A R Prophet
Baldridge Pratissa W165
****Hoover Dam**
Baldridge Blackbird X89
#SydGen Enhance
#S S Miss Daybreak K011 3K17
#Diablo Deluxe 1104
***Boyd/Myers Butter Fly M236**

SM	+86
SW	+80
SF	+93
SB	+180
SC	+319

CED	BW	WW	YW	RADG	SC	DOC	CLAW	ANGLE	HS	HP	CEM	MILK	CW	MARB	RE
+12	-.4	+83	+144	+27	+50	+36	+49	+50	-.01	+17.0	+4	+23	+57	+1.37	+67

Dam Progeny Record	BWR	WWR	YWR	IMF	UREA	RBFT	RPFT

AJC Angus
The strongest of the three flush brothers for \$C and CED, these three also offer an outcross pedigree for many customers.

49 AJC Versatile 3L

Birth Date: 04-09-2023 Bull #*20635202 Tattoo: 3L

BW	RATIO	WW	RATIO	YW	RATIO	ADJ HIP	ADJ SC
91	100	681	100	1182	100		

****Baldridge Versatile**
****Baldridge Forecaster B160**
Baldridge Blackbird A030
***S S Enforcer E812**
***SydGen Butter Fly 0426**
***Spruce Mtn Butter Fly 8574**

##*G A R Prophet
Baldridge Pratissa W165
****Hoover Dam**
Baldridge Blackbird X89
#SydGen Enhance
#S S Miss Daybreak K011 3K17
#Diablo Deluxe 1104
***Boyd/Myers Butter Fly M236**

SM	+61
SW	+59
SF	+80
SB	+161
SC	+270

CED	BW	WW	YW	RADG	SC	DOC	CLAW	ANGLE	HS	HP	CEM	MILK	CW	MARB	RE
+3	+1.9	+80	+144	+30	+98	+37	+37	+49	-.06	+14.1	+5	+15	+44	+1.30	+43

Dam Progeny Record	BWR	WWR	YWR	IMF	UREA	RBFT	RPFT

AJC Angus
The dam of these three powerful flush brothers was selected as a feature of the 2022 SydGen Production sale, from a family well-proven at Diablo Valley, Myer's Angus Farm, Thomas Angus Ranch and Boyd Beef Cattle.

Cowboy Logic #20

One of the toughest decisions we make each year is determining which genetic values and what performance data should be printed in the sale book. Our preference is to print the data most breeders use in their selection decisions, and that is what we believe we have included. We also prefer to condense the data as much as possible, so the information is easier to read and quicker to comprehend when one is making decisions at the pace of an auction sale. Last year, we added the HS (Hair Shedding) EPD to the layout, since several phenotypes from our herd have been submitted over the years. Meanwhile, all registration numbers are provided here, and every EPD and bio-economic index is available to you on the EPD/Pedigree Lookup page at www.angus.org. On sale day, the most current EPDs on all Lots will also be posted.

"Today, it's not commodity Choice or Select driving the business. The Choice/Select spread is increasingly irrelevant in the marketplace. It's where we've been.

The true threshold of value differentiation is modest-or-better marbling. That's the better cutoff in terms of determining margin contribution. That's where we are and will continue to go.

Since 2005, Prime and Branded sales have accounted for 60% of the new dollars coming into the business. During that same time, the annual growth rate for the Prime category exceeded 14% and the Branded category was more than 10%.

Prime has seemingly become a category unto itself. It's consistently grabbing a bigger portion of market share. It's been said but is worth repeating: Consumers are sending a clear message – quality really matters."

---Nevil Speer, September 2024 Drivers Journal

Docility

Several SydGen herd sires rank high on the Docility EPDs of the American Angus Association.

Connealy Cool 39L, SydGen CC&7, SydGen Liberty GA 8627, SAF Connection and SydGen Black Ice 7029 all rank in the elite top 1% of proven sires for Docility EPD. 14 more SydGen sires rank in the top 10% for Docility, and most are well above breed average.

Data from the Tri-County Futurity showed a \$40 per head advantage for docile cattle versus those who scored nervous to very aggressive.



HA Henrietta Pride 258

Birth Date: 11-22-2022

Cow #20502908

Tattoo: 258

*SydGen Blueprint

##**KM Broken Bow 002

##Summitcrest Complete 1P55

##Summitcrest Princess 0P12

##*Sitz Florabelle Fanny 4735

##*Sitz Investment 660Z

##*Sitz Florabelle Fanny 2683

ANGUSGS
Powered by MCEVY

##*V A R Discovery 2240

##*A A R Ten X 7008 S A

##*Deer Valley Rita 0308

##*BAF Henrietta Pride B181

##*Connealy Consensus 7229

##*Sitz Henrietta Pride 643T

##*PF 7229 Henrietta Pride 1554

SM	+98
SW	+73
SF	+66
SB	+138
SC	+277

CED	BW	WW	YW	RADG	SC	DOC	CLAW	ANGLE	HS	HP	CEM	MILK	CW	MARB	RE
+6	+1.1	+63	+99	+19	+32	+25	+43	+39	+22	+15.6	+9	+29	+30	+95	+69

Herron Angus

The only registered female selling today, her sire has earned a strong reputation for foot soundness and fertility, and is the sire of S Architect at Genex. Dam is a Henrietta Pride, a family that has produced countless top-sellers for Pollard, Sitz, Express and many other top programs. Safe in calf to De-Su E11, reg. no. 20284288, on January 26, 2025, making her an exceptional 3-N-1 value.



SYDGEN BLUEPRINT -
SIRE OF LOT 51



HA Henrietta Pride 460

Birth Date: 12-05-2024

Cow #21125445

Tattoo: 460

*Seagraves Fireball 2190

##*GB Fireball 672

##*G A R Sure Fire 6404

##*GB Anticipation 432

Seagraves Foreverlady 9414

##*V A R Discovery 2240

##*Three Trees Foreverlady 2898

ANGUSGS
Powered by MCEVY

*SydGen Blueprint

##**KM Broken Bow 002

##*Sitz Florabelle Fanny 4735

##*HA Henrietta Pride 258

##*V A R Discovery 2240

##*BAF Henrietta Pride B181

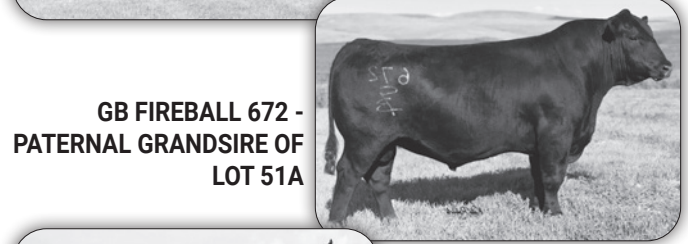
##*PF 7229 Henrietta Pride 1554

SM	+78
SW	+61
SF	+91
SB	+191
SC	+326

CED	BW	WW	YW	RADG	SC	DOC	CLAW	ANGLE	HS	HP	CEM	MILK	CW	MARB	RE
-4	+3.2	+62	+110	+27	+96	+18	+44	+34	+35	+14.0	+7	+30	+44	+1.58	+84

Herron Angus

Sired by a son of the popular GB Fireball from the DeVore family in Illinois, former consignors to the Influence sale, she offers a lot of style along with a top EPD profile and a powerful cow family..



GB FIREBALL 672 -
PATERNAL GRANDSIRE OF
LOT 51A



Sitz Henrietta Pride 643T -
Great Grandam of Lot 51

EPDs

We have the following abbreviations throughout this book with regard to EPDs. Remember that an EPD is an estimate of how future progeny will perform, relative to other Angus cattle with EPD values. The accuracy figure, just after the EPD, indicates the possible future change in the EPD. The higher the accuracy, the less likely the EPD will change appreciably.

BW – Birth weight, expressed in pounds.

WW – Weaning weight, expressed in pounds adjusted to 205 days of age.

Milk – Influence of the dam, due to her milking ability, on weaning weight, expressed in pounds of calf weaned.

YW – Yearling weight, expressed in pounds adjusted to 365 days of age.

RADG--Expressed in pounds per day, is a predictor of a sire's genetic ability for postweaning gain in future progeny compared to other sires, given a constant amount of feed consumed.

CW – Carcass weight, expressed in pounds at a given end point.

MB – Marbling, expressed as a portion of a marbling score (one point of marbling score = 1/3 quality grade).

REA – Ribeye area, expressed in square inches, at a given end point.

FT – Fat thickness, expressed in inches, at a given end point.

SC – Scrotal circumference, expressed in centimeters, at a year of age.

CED—Percentage of unassisted births when a sire is mated to virgin heifers. Higher values indicate more unassisted births.

CEM—Percentage of unassisted births as first calf heifers.

CLAW-- Is expressed in units of claw-set score, with a lower EPD being more favorable indicating a sire will produce progeny with more ideal claw set. The ideal claw set is toes that are symmetrical, even, and appropriately spaced.

ANGLE-- is expressed in units of foot-angle score, with a lower EPD being more favorable indicating a sire will produce progeny with a more ideal foot angle. The ideal is a 45 - degree angle at the pastern joint with appropriate toe length and heel depth.

HS--is expressed in units of hair shed score, with a lower EPD being more favorable indicating a sire should produce progeny who shed their winter coat earlier in the spring. Selection for this trait should improve the genetic potential for a sire's progeny to shed off earlier, increasing the environmental adaptability of cattle living in heat-stressed areas and producers grazing endophyte-infected (hot) fescue.

DOC—Percentage increase in number of progeny scoring 1 (most docile)

HP—Percentage increase in number of daughters pregnant in their first breeding season.

Photos

We guarantee that every photo with a SydGen signature has had no touching up to misrepresent the animal in any way. We will clean off some manure and dirt, but you can rest assured that the animal's lines and conformation have not been altered in any way.

Mershon Cattle LLC



40

Two-Year-Old Commercial Spring Pairs, sorted into 10 groups of about 4 pairs

These two year old heifers have calves at-side that will be 10-30 days old on sale day, sired by SydGen natural service bulls. All the heifers will be black or black baldies. The sires of the calves will be sons of SydGen Blueprint, SydGen Enhance, SydGen Merit 6553, De-Su Volunteer B122, SydGen Black Diamond 2768, Bakers Northside 6007, SydGen II Lombardi 9045, HPCA Early Bird 65, and SydGen Exceed 3223, and were Show Me Select-qualified service sires for heifers. Steermates to these heifers walked into Darr Feedlot at 977 pounds, yet gained 4.4 pounds/day for the feeding period, then earned \$7.25/cwt. premium over the base grid. All of these commercial commercial females are from Mershon Cattle LLC. They have a comprehensive animal health program on the cows, and in addition, the baby calves at-side will have Nasalgen3 with PMH prior to sale time, and a dose of Draxxin the day of the sale.

52 2-Year-Old Commercial Spring Pairs

53 2-Year-Old Commercial Spring Pairs

54 2-Year-Old Commercial Spring Pairs

55 2-Year-Old Commercial Spring Pairs

56 2-Year-Old Commercial Spring Pairs

57 2-Year-Old Commercial Spring Pairs

58 2-Year-Old Commercial Spring Pairs

59 2-Year-Old Commercial Spring Pairs

60 2-Year-Old Commercial Spring Pairs

61 2-Year-Old Commercial Spring Pairs



You, the commercial cattlemen, are the foundation of the beef industry. Thank you for your support of the SydGen program, and these contributing breeders who have joined us to present the sale offering today.



If there is anything you would like us to do differently, please let us know. We want you to be successful, and we want to supply you with the genetics and the information that will aid your success.

We were able to get just a few photos to include in the sale book. We will try to get videos on many of the bulls, and have them available at least a week to 10 days prior to the sale. Some of the bulls will be videoed on sale day, as well, so check again on Tuesday afternoon. You will be able to find them at:

www.dvauction.com • www.sydgen.com

We will also try to have updates available on the SydGen page as we get closer to sale time.

THE COWS BEHIND THE PROGRAM



SYDGEN FOREVER LADY 7829
Dam of Lots 13 & 14



SYDGEN PRIMROSE 6220
Grandam of Lot 36



SYDGEN FOREVER LADY 4087
Dam of SydGen C C & 7
Foundation for Lot 23



G A R COMPLETE 1411
Dam of Lot 20
Grandam of Lot 21



SYDGEN ANITA 8611
Dam of Jeremiah, Patriarch, & Black Pearl
Foundation for Lots 6 & 15



THOMAS BUTTERFLY 4742
Great grandam of Lots 48, 49, & 50



URF SARAH 1514
Dam of URF Alpha G138



LHR - BAR RITA 1682-7222
Grandam of Lot 29



BCA MARY BLACKBIRD 2742
Foundation for Lots 37, 38, 46, & 47